

Community Advisory Working Group

Meeting #1

January 30, 2012



Meeting Objectives

- To provide an overview of the background, context and scope of work for the Community Advisory Working Group
- To confirm Community Advisory Working Group mandate, roles, responsibilities, expected outcomes and process timeline
- To solicit working group member perspectives regarding operational considerations, needs and concerns associated with the North Vancouver School District Learning Centre at Balmoral
- To clarify next steps including additional information needs, homework and subsequent meetings



Proposed Agenda

- Background and Context for Community Advisory Working Group (CAWG)
- CAWG Process Overview – Mandate , Roles, Responsibilities and Expected Outcomes
- Overview of candidate programs at NVSD Learning Centre at Balmoral
- Breakout Group Discussions
- Report Back from Breakout Groups
- Confirmation of Agreements and Next Steps



A few guidelines

We will work best if we:

- Honour one voice at a time
- Challenge ideas, not people
- Listen
- Try to be succinct
- Make space for others to participate
- Stay on topic and on time
- Make sure your words are recorded



Background and Context for Community Advisory Working Group



NVSD 10 Year Strategic Plan

1. Expand the availability of best instructional practices and enriched curriculum
2. Encourage the growth of collaborative, adaptive and personalized learning environments
3. Nurture an inspiring and healthy work environment
4. Develop and promote innovative and sustainable programs
5. Strengthen and expand reciprocal community relations



Summary

- Budget Challenge 2010
- April 20, 2010 – Consolidation of Alternate Programs
- October '10-January '11 – Community Learning Program Working Group
- February '11 – Report of Community Learning Program Working Group received at Public Board meeting (see report for complete list of recommendations)
- March '11 – June '11 – CLP Working Group focus on Choices programs at Sutherland Secondary with incremental implementation at all other secondary sites



Summary (cont'd)

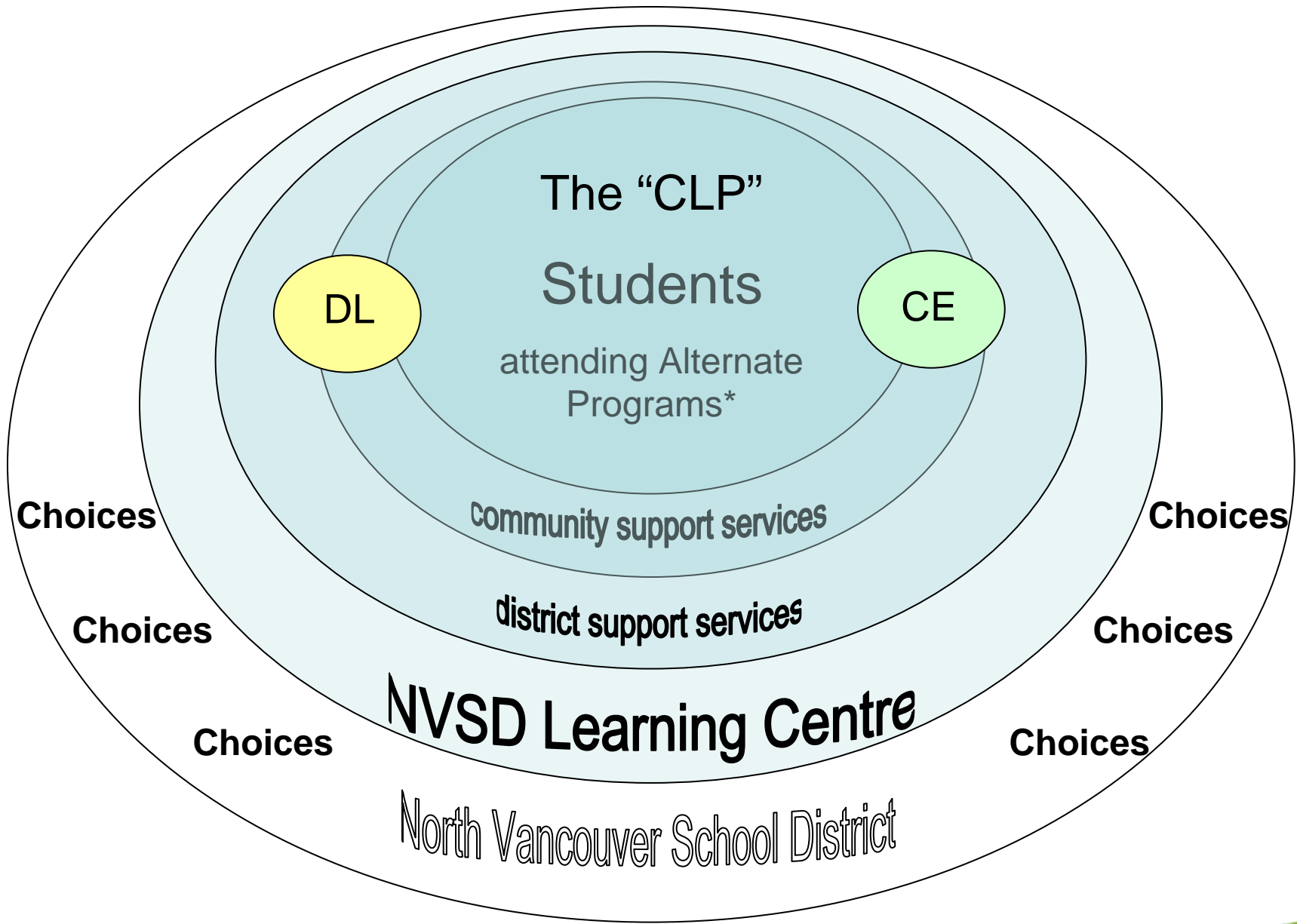
- September '11 – November '11 – CLP Working Group focus on CLP for implementation September 2012
- November 15, 2011 – Public Board meeting recommendation of Balmoral as the site for the CLP as part of the North Vancouver School District Learning Centre
- January 8, 2012 – Community Public Meeting



NVSD Learning Centre at Balmoral

- Community Learning Program (Board decision)
- Other candidate programs & services
 - Distributed Learning
 - Continuing Education
 - District Services
 - Community Use





* Alternate Programs (meeting Ministry of Education criteria)



Community Advisory Working Group Process Overview



Community Advisory Working Group Mandate

- Provide advice on the operations of the North Vancouver School District Learning Centre at Balmoral,
- Identify needs and potential impacts and concerns associated with these operations, and
- Suggest measures to address identified needs and concerns



Community Advisory Working Group Role

- Consider information collected to date regarding operational issues associated with the NVSDLC at Balmoral
- Identify operational considerations, needs and issues associated with the Community Learning Program and other candidate NVSDLC programs and services (Distributed Learning Centre, District Support Services, Continuing Education, and Community Use)
- Identify measures to address operational considerations, needs and issues
- Make recommendations to the Executive Committee and the Board of Education regarding program operations of the NVSDLC at Balmoral



Community Advisory Working Group Responsibilities

- Attend Working Group meetings on Jan 30, Feb 27 & Mar 26
- Represent the membership of your organization or constituency
- Attend all meetings
- Keep your constituency informed of CAWG discussions
- Gather input from your constituency and bring this input to Working Group meetings.
- Strive to be inclusive of the array of perspectives within your constituency when participating in Working Group discussions.



Community Advisory Working Group Expected Outcomes

- Recommendations regarding programs and services to be located at the North Vancouver School District Learning Centre (NVSDLC) at Balmoral (in addition to the Community Learning Program)
- A list of needs, issues and concerns associated with the operations of proposed programs and services at NVSDLC at Balmoral
- Suggested measures to address needs, issues and concerns associated with the operations of proposed programs and services at NVSDLC at Balmoral



Community Advisory Working Group Communications

- A meeting summary will be generated after each Working Group meeting. The meeting summaries will be posted on the NVSD website and distributed through email contacts.
- A Final Community Advisory Working Group Report will incorporate findings and recommendations for consideration by the Executive Committee and the Board of Education



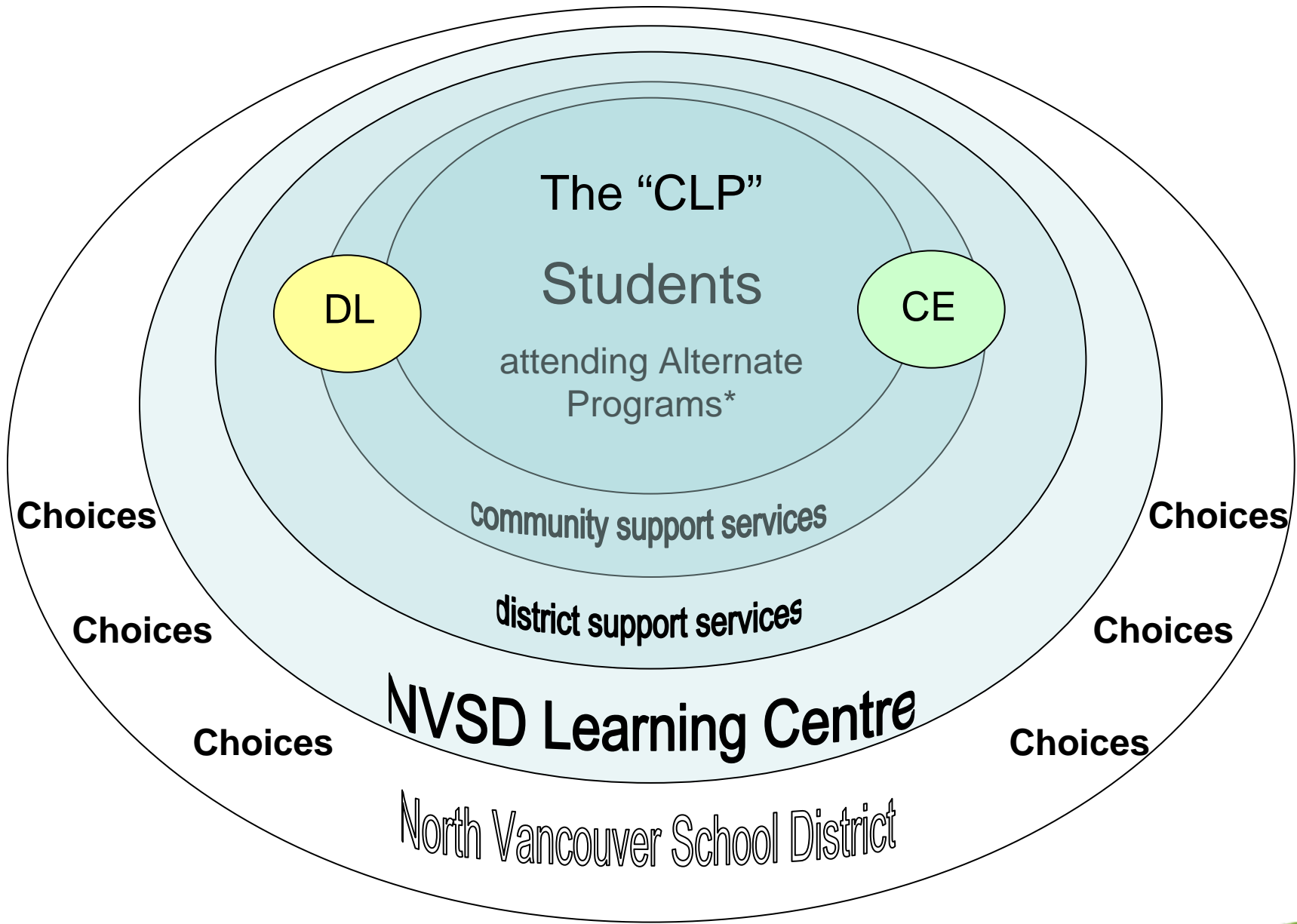
Community Advisory Working Group Timeline

- Working Group meetings:
 - January 30, February 27 and March 26
- Public Meeting to communicate CAWG findings and recommendations (date in April to be confirmed)
- Final Community Advisory Working Group Report submitted to Executive Committee and the Board of Education following April Public Meeting



NVSD Community Learning Centre at Balmoral Overview of Programs





* Alternate Programs (meeting Ministry of Education criteria)



Community Learning Program

- Features
 - Flexible individualized programs
 - Reduced class size teacher ratio 15-20:1
 - Students aged 14-18 (grades 9-12)
 - Cohorts (PODs) Junior grades
 - Elective courses (as mainstream secondary students)
 - Total enrollment 150 – 175 students)
- Staffing (approx. 25 FTE)
 - Administration, Teachers, Counsellors, YEWs, SEAs, Supervision aids, Clerical
- Facility
 - Hours as per mainstream High School (8:00 – 5:00)
- Support Services (approx. 3-4 people)



The CLP and Community Services

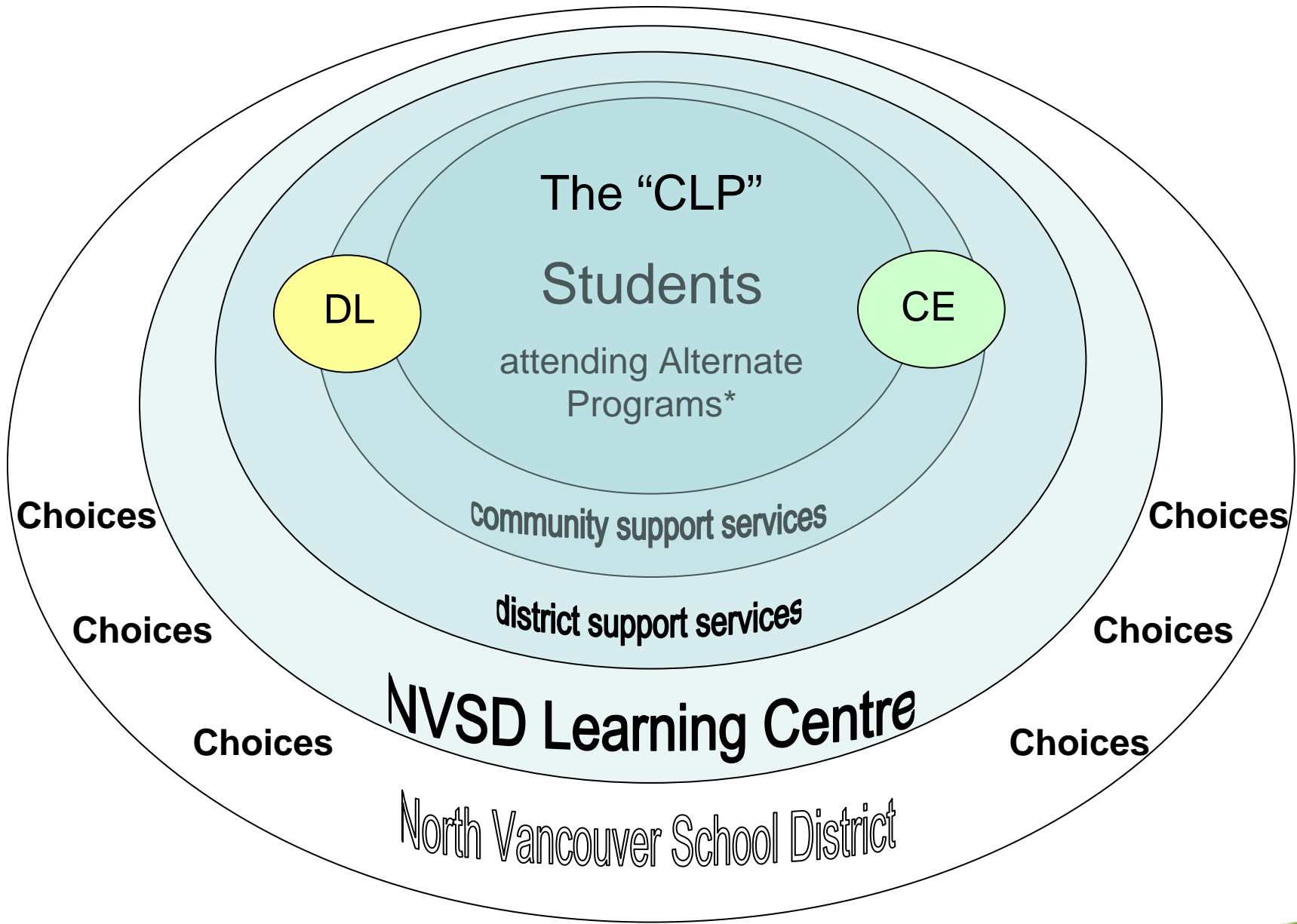
- Wrap-around support services for students
 - Health & nutrition (food program breakfast/lunch)
- Community services partners for CLP
 - Vancouver Coastal Health
 - Youth Health Clinic
 - Ministry of Child and Family Development
 - North Shore Neighbourhood House
 - Capilano, Parkgate, Hollyburn Youth Services
 - North Shore Multicultural Society
 - Tsleil-Waututh and Squamish Nations
 - additional contacts with RCMP (school liaison)



Choices Program Features

- School-based support services for secondary students at their mainstream secondary schools
- Flexible and adaptable schedule and programming: to meet the daily needs of students
- Low staff to student ratio
- Additional counselling support at the school level
- Provides transitions between the Choices and the Community Learning Program: students will enter the CLP from Choices and return to Choices from the CLP.
- Supported through the School Based Resource Team and the District Resource Team
- Maintains students within their home school environment
- Will result in decreased enrolment in the CLP over time





* Alternate Programs (meeting Ministry of Education criteria)



NVSD Learning Centre - DL

- The North Vancouver Distributed Learning School provides students with an alternate, flexible pathway to complete courses at the Grade 10-12 levels
- Part of Community Learning Program (students already in building)
- DL also for other students (students not in building) *reviewing numbers attending site at this time
- face-to-face interaction is provided at our Distributed Learning Centre
- online learners: youth and adults, non-grads and grads, from North Vancouver and around the province with a variety of educational needs
- DL in all secondary schools, in addition to CLP



NVSD Learning Centre - CE

- The Continuing Education Program offers face to face classes for adults; Literacy Foundations (levels 3-7) and English 10, 11, and 12 (presently up to 200 students attend per day for classes held from 9:00 – 12:00 pm daily)
 - Approximately 120 cars associated with CE (numbers under review)
- Literacy Foundations courses are foundational courses that allow students to enter into Grade 10 level curriculum
- the program is designed for students to gain experience in listening, speaking, reading, writing and to become proficient in English
- student population is primarily new Canadians, (English Language Learners), who require English skills to gain employment



NVSD Learning Centre - District Support Services

- District Support Services (presently located at LMCC/Lucas)
 - Science Kits, media storage, musical instruments, etc.
 - Archival storage – records management
 - Library cataloguing – processing of library books
 - North Shore Athletics Association office
 - Total space needs: approximately 6 rooms with 5 district staff
- Other district services not accommodated within the Education Services Centre on Lonsdale will be relocated to schools
- Maintenance function will remain at the Lucas Centre until a suitable location and site can be identified



NVSD Learning Centre - Community Use

- Space being considered: Gymnasium and present cafeteria
- Hours of operation:
 - Before and after school and on weekends
 - On weekends (e.g., Recreation Commission rentals)
- Type of use: Depends on Joint Use Agreement with Recreation Commission
 - Staffing: may have a staff coordinator on site
- Recommendations to proceed with community use would require further communication with the Recreation Commission



Questions & Answers



Breakout Group Discussions

Key Question: Thinking about the programs and services being considered for inclusion in the NVSD Learning Centre at Balmoral in addition to the Community Learning Program, how can operations be managed to address all needs and concerns?

➤ **Question #1** – What operational considerations are important to support a successful program or service?

➤ **Question #2** – What needs or concerns have been raised in relation to these operational considerations? Are there others?



Next Steps

- Post presentation materials to website
- Develop meeting summary - circulate to Working Group and post on website
- Working Group members to communicate progress to constituencies and bring additional information to next meeting
- Next Meeting – February 27, 2012



Next Steps (cont'd)

Meeting #2 – February 27, 2012

- Identify additional options or issues
- Consider issues, concerns and solutions resulting from Jan 30 meeting
- Consider measures to best address identified concerns.

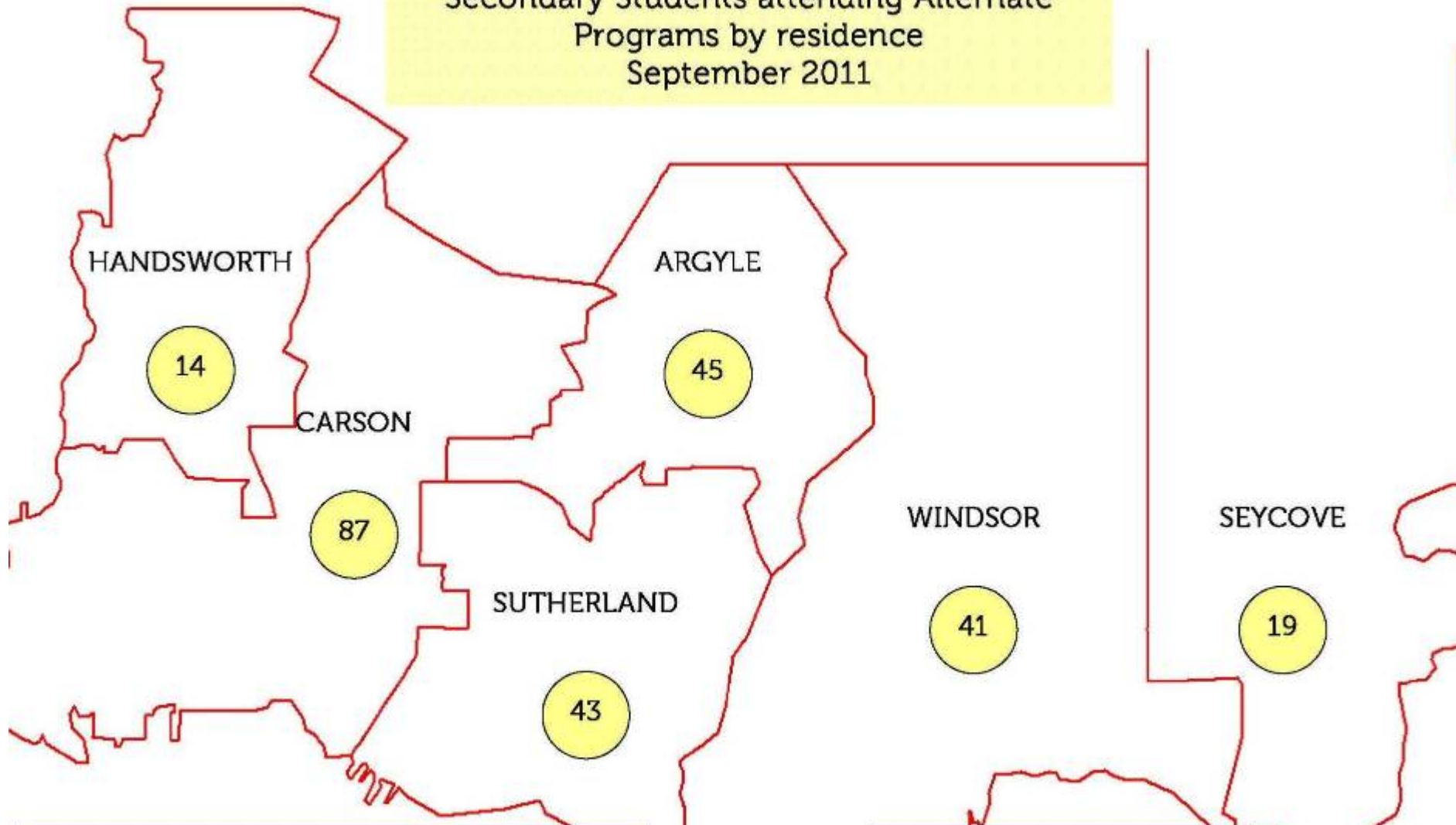
Meeting #3 – March 26, 2012

- Confirm program choices and potential measures to address issues and concerns

Closing / Thank you!



Secondary Students attending Alternate Programs by residence
September 2011



37% of students live within 2.5 km of Balmoral,
47% live within 3 km of Balmoral
76% of students live in West and Central Areas

TOTAL Enrolment = 257
In District = 249
Out of District = 8

Community Advisory Working Group

Student reps	Cooper Heibloem (Keith Lynn)	aquaticgirl_94@hotmail.com
	Anna Simmons (Youth Learning Centre)	annasimmons94@gmail.com
PAC reps	Krista Tulloch (Braemar)	ktulloch@shaw.ca
	Myles Aikenhead (PAC Chair: Carson North Campus)	myles.aikenhead@gmail.com
	Laura Mack (Keith Lynn PAC)	lauramack@telus.net
	Kelly Skuse (Youth Learning Centre)	kskuse@telus.net
School Admin	Heather McTaggart, Principal, Braemar Elementary	hmctaggart@nvsd44.bc.ca
	Jeremy Church, District Administrator	jchurch@nvsd44.bc.ca
	Maureen Stanger, District Administrator	mstanger@nvsd44.bc.ca
Community reps	Carolyn Berg	CBerg@sunprovince.com
	Brian Wilson	brianwilson@shaw.ca
	Kevin Macauley	kfmacauley@gmail.com
	Troy Vassos	tvassos@novatec.ca
	Lynne Charbonneau	Lynne_Charbonneau@hsbc.ca
	Keith Collyer (Alternate representative)	atlantic@shaw.ca
Rec Commission rep	Bernie Blake	blakeb@northvanrec.com
NVSD District Staff	Mark Jefferson, Assistant Superintendent	mjefferson@nvsd44.bc.ca
	Monty Bell, Director of Instruction: Learning Services	mbell@nvsd44.bc.ca
	Ian Abercrombie, Director Facilities and Planning	iabercrombie@nvsd44.bc.ca
	Irene Young, Secretary Treasurer	iyoung@nvsd44.bc.ca
School Trustees	Trustee Cyndi Gerlach	cgerlach@nvsd44.bc.ca
	Trustee Susan Skinner	sskinner@nvsd44.bc.ca



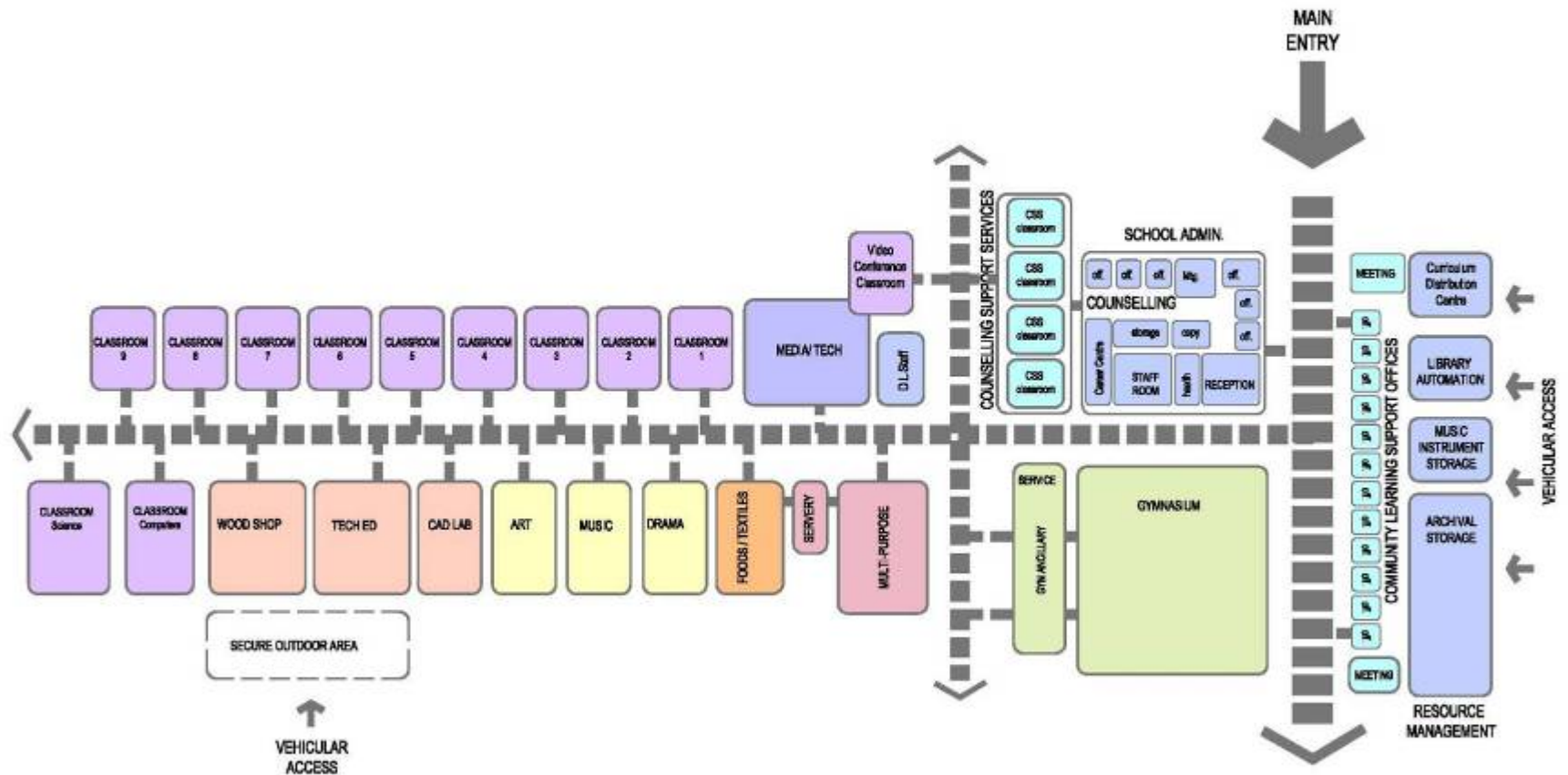
Renovation plans
Joint Use Opportunities /
Community Impact



PROPOSED CONSOLIDATED FACILITY

Detailed Relationship Diagram

Based on 200-250 students + 40 - 50 Staff + outside support services



COMMUNITY LEARNING PROGRAM - FACILITY OPTION REVIEW

November 5 2011

Option	A	B	C	D	E	
Issue	New Facility	Keith Lynn Alternate Secondary School	Plymouth Elementary School Renovation + Addition	Lucas Centre Renovation	Balmoral Secondary School Renovation	Recommendation
(1) Construction	\$ 15,000,000.00	\$ 15,000,000.00	\$ 6,000,000.00	\$ 5,000,000.00	\$ 2,500,000.00	E
(2) Lost Opportunity for Land Value	To Be Determined	Minimum lost Value	Medium Lost Value	Maximum lost value	Medium lost Value	B
(3) Location	Central	Off-Central	Distant	Off-Central	Central	A & E
(4) Facility Suitability	Best	Poor	Poor	Poor	Fair	A
(5) Long Term Planning	Good	Poor	Poor	Fair	Good	A & E
(6) Educational Programs	Good	Poor	Poor	Fair	Good	A & E
(7) Seismic Rating	Best	Fair	Fair	Fair	Fair	A
(8) Community Use	Best	Poor	Poor	Fair	Good	A & E
						E

Explanatory Notes

(1) Construction values based on the following

New Construction at \$3,000.00 m2
 Renovation rate at \$200.00 m2 simple renovation.
 Renovation rate at \$800.00 m2 for reconfiguration of use
 Renovation rate at \$1800.00 m2 for total reconfiguration / new use
 Balmoral - blended rate at \$500.00 m2
 Lucas Centre - Blended rate at \$1,000.00 m2
 Plymouth - Blended rate of \$1,200.00 m2 (new / reno)
 Keith Lynn Alternate - New Facility recommended.
 Area of Facility - approximately 5000 m2

(2) Lost Opportunity for Land Value

use of site for school results in potential loss of land value

(3) Location

Central location within North Vancouver is most desirable

(4) Facility Suitability

Suitability of Existing facility for secondary school - Size, durability, construction type

(5) Long Term Planning

Compatibility with long term planning in School District

(6) Educational Programs

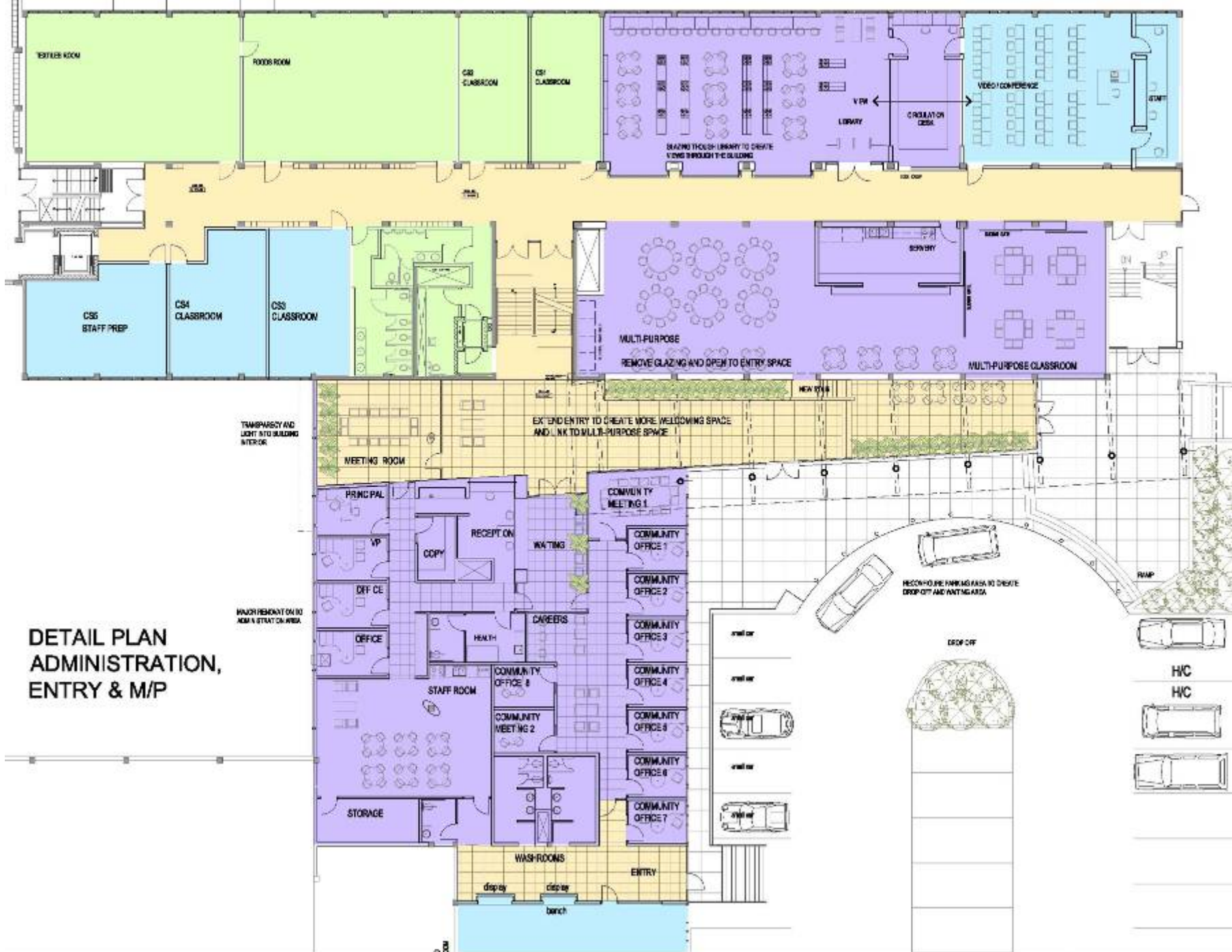
Suitability of existing facility to suit variety of program spaces required

(7) Seismic Rating

Structural stability of building to withstand a seismic event & cost to upgrade.

(8) Community Use

Suitability of Existing facility for Community uses.

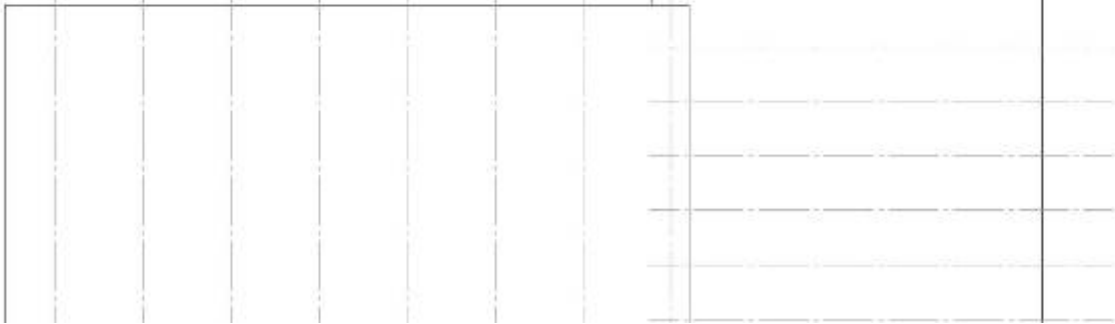


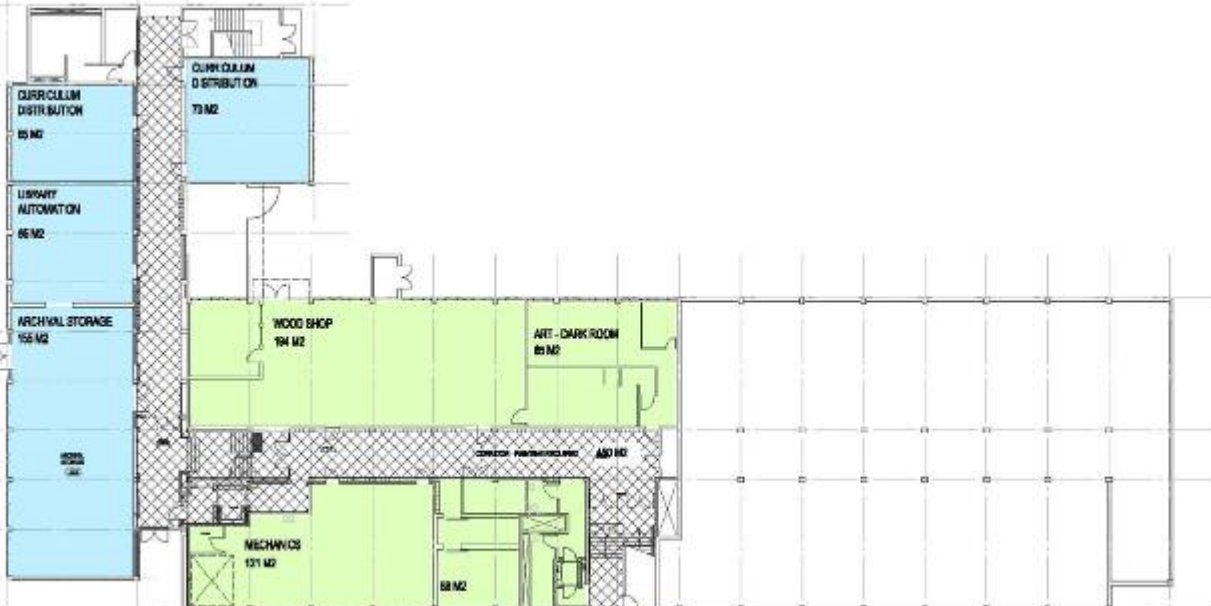
**DETAIL PLAN
 ADMINISTRATION,
 ENTRY & M/P**



- ROOM NOT REQUIRED
- NO RENOVATION REQUIRED
- RECONFIGURATION OF SPACE TO SUIT SIMILAR PROGRAM
- DEMOLITION AND RENOVATION TO SUIT NEW PROGRAMS
- AREA OF ADDITION

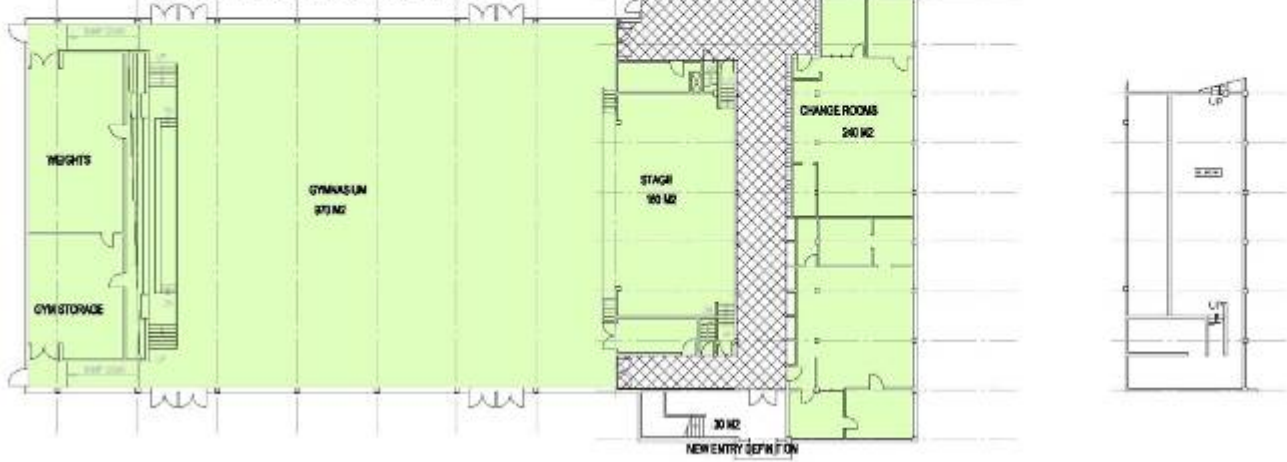
UPPER FLOOR PLAN





- ROOM NOT REQUIRED
- NO RENOVATION REQUIRED
- RECONFIGURATION OF SPACE TO SUIT SIMILAR PROGRAM
- DEMOLITION AND RENOVATION TO SUIT NEW PROGRAMS
- AREA OF ADDITION

LOWER FLOOR PLAN





OPTION 3

