

Community Consultation Meetings

Proposed closure of Ridgeway Annex

proposed closure of Balmoral

Towards the Future for Schools 2009

March 25, 2009



**NORTH VANCOUVER
SCHOOL DISTRICT**
OPPORTUNITY • CHALLENGE • SUCCESS

*the natural place
to learn*

www.nvsd44.bc.ca

OPPORTUNITY • CHALLENGE • SUCCESS



Welcome

Introductions and Overview

Looking back on recent district initiatives

Questions of Clarification

Rationale for the consideration of closure

Review Policy 610 criteria

Questions and Answers

Input opportunity to inform the Board



NORTH VANCOUVER
SCHOOL DISTRICT
OPPORTUNITY • CHALLENGE • SUCCESS

*the natural place
to learn*

www.nvsg44.bc.ca

OPPORTUNITY • CHALLENGE • SUCCESS



We provide world-class instruction and a rich diversity of engaging programs to inspire success for every student and bring communities together to learn, share and grow.

We provide world-class instruction and a rich diversity of engaging programs to inspire success for every student and bring communities together to learn, share and grow.



We provide world-class instruction and a rich diversity of engaging programs to inspire success for every student and bring communities together to learn, share and grow.



We provide world-class instruction and a rich diversity of engaging programs to inspire success for every student and bring communities together to learn, share and grow.



**NORTH VANCOUVER
SCHOOL DISTRICT**
OPPORTUNITY • CHALLENGE • SUCCESS

*the natural place
to learn*

www.nvsd44.bc.ca

OPPORTUNITY • CHALLENGE • SUCCESS



Vision for the future/reflections on the past

- The Board of Education strives to preserve and enhance the **quality of instructional services** and **educational opportunities** for students within public education in North Vancouver, while maintaining the **viability of schools** within all areas of the community.
- The Board developed its **Vision** for the future and established a ***Sustaining Schools Working Committee*** to help sustain the operation of schools within the School District as an **alternative to the consideration of the closure of schools**.
- The **Vision process** engaged the community in consultation and resulted in the identification of key areas to enhance the quality of instructional services and educational opportunities for students.



**NORTH VANCOUVER
SCHOOL DISTRICT**

OPPORTUNITY • CHALLENGE • SUCCESS

www.nvsg44.bc.ca

*the natural place
to learn*

OPPORTUNITY • CHALLENGE • SUCCESS



Annual Community Forums have engaged the community in consultation on important school district matters

2003 - Community Input on Changes to our Schools

2004 - Student Success & Programs of Choice

2005 - Healthy Active Schools, Healthy Active Students

2006 – I.B., French Immersion & Careers

2007 - Creating a Shared Vision for the Future

2008 – Towards the Future for Schools



Towards the Future for Schools 2008

(emerging themes)

- **Enhancing program offerings**
- **Supporting early learning, preschool and before and after school care**
- **Expanding community use and partnerships**
- **Coordinating community planning**
- **Building new schools**



**NORTH VANCOUVER
SCHOOL DISTRICT**

OPPORTUNITY • CHALLENGE • SUCCESS

www.nvsg44.bc.ca

*the natural place
to learn*

OPPORTUNITY • CHALLENGE • SUCCESS



Enhancing program offerings

- support for the diverse range of program offerings being provided and considered, particularly at Secondary schools
- support for the expansion of French Immersion Program to Windsor Secondary in 2009 and potential expansion of LFI to increase enrolment at Windsor and to help reduce enrolment pressures at Argyle Secondary
- need to ensure that opportunities are suitable for all students and that new programs increase their ability to accommodate a more diverse student population
- care must be taken to ensure that School District resources are not spread too thinly to compromise the quality and depth of existing programs



Enrolment changes resulting from increasing district program offerings

- *District Programs* have served to increase opportunities for all students; e.g. Hockey Academy at Windsor, AFK Visual Art Academy at Carson, Digital Media Academy at Argyle, Peak Performers (at 5 Secondary), IB at Carson, Balmoral & Capilano (and future PYP expansion)
- New program offerings are appealing; they have predominantly served to redistribute our existing students, and to retain students resident in North Vancouver
- Communication of program opportunities should continue to be enhanced to help sustain enrolment



Supporting early learning, preschool and before and after school care

- integrate pre-school, early learning programs, StrongStart, before and after school care within existing schools to help build stronger communities; supporting working parents and staff; helping enable young families to live within the community
- continue advertising available space for community groups and non-profit organizations to identify opportunities for the provision of day care for preschool and school-aged children
- continue to work with child-care, not for profit service providers, and the Recreation Commission to help coordinate the range of programs provided to children
- incorporate preschool and daycare spaces into new schools



NORTH VANCOUVER
SCHOOL DISTRICT

OPPORTUNITY • CHALLENGE • SUCCESS

www.nvsg44.bc.ca

*the natural place
to learn*

OPPORTUNITY • CHALLENGE • SUCCESS



Expanding community use and partnerships

- integrating young children in the community and providing support services for working families will build a stronger sense of connection to the local school; this is key to creating cohesive and connected communities
- community connections with non-profits and service providers like Vancouver Coastal Health, day cares and the Recreation Commission should be strengthened, while continuing with our own shared use of facilities
- continue to build upon existing partnerships to further expand community use of facilities
- when constructing new facilities there should be provision for community space, day care and out of school care similar to the new Westview school



Coordinating community planning

- work with the City and District of North Vancouver to address affordable housing for young families; affordable housing in close proximity to schools will foster vibrant neighbourhoods, free of excessive traffic
- coordinate construction of new schools to incorporate community amenities to address community needs (health, social, recreation); engage the immediate community, the municipality and the Recreation Commission in discussions related to the planning of the construction of new schools
- the *Neighbourhoods of Learning* concept suggests a return to community schools; funding is supported in new facilities



**NORTH VANCOUVER
SCHOOL DISTRICT**

OPPORTUNITY • CHALLENGE • SUCCESS

*the natural place
to learn*

www.nvsg44.bc.ca

OPPORTUNITY • CHALLENGE • SUCCESS



Building new schools

- the consolidation and construction of new facilities is preferred to renovating existing facilities; new buildings will be an asset to the school district, enable increased joint use, implementation of energy efficiency measures, and will increase pride in schools and the community
- prior to consolidating schools, new schools should be in place
- there is a need to ensure that sufficient land is retained for the future needs of the school district and the community; long term leases should be considered as an alternative to the sale of School District property



**NORTH VANCOUVER
SCHOOL DISTRICT**

OPPORTUNITY • CHALLENGE • SUCCESS

www.nvsg44.bc.ca

*the natural place
to learn*

OPPORTUNITY • CHALLENGE • SUCCESS



Sustaining and Enhancing Quality Education

The small school that was a cornerstone of the 1960s

Small Intake Many Schools (SIMS) neighbourhood model

is no longer sustainable. **Larger schools are required.**

- Optimal School Size - Demands of economic viability need to be balanced with optimal learning conditions for all students in NVSD
- Large enough to provide opportunities and flexibility, while small enough to be remain cohesive and efficient.
 - Elementary Schools *Optimal size* (300 – 500 students)
 - Secondary Schools *Optimal size* (1000 – 1300 students)

“OPTIMAL” should be considered as a local description defined by the conditions of the BC Education system



**NORTH VANCOUVER
SCHOOL DISTRICT**
OPPORTUNITY • CHALLENGE • SUCCESS

*the natural place
to learn*

www.nvsg44.bc.ca

OPPORTUNITY • CHALLENGE • SUCCESS



Sustaining and Enhancing Quality Education

Community expectation of “full service neighbourhood schools”

Having a larger student population and cadre of staff enables:

- More flexibility in assigning students (social, academic, straight grades, etc.)
- More opportunities for teacher collaboration & to draw upon resident expertise
- More ability to provide specialty support (eg. Music, Library, French, LAC, ESL)
- More course offerings available to students
- More opportunities for teachers to teach in their specialty area
- More potential to hire teachers with expertise in areas of high demand (Science, Math, Technology)
- More ability to provide adequate level of learning materials and resources
- More comprehensive and diverse extra-curricular program
- More potential for sharing of ever-increasing responsibilities (both staff and parents)





District initiatives – building for the future

Questions of clarification



How things have changed since 2004 !

- New Schools have been, and will be built, at Lynn Valley, Westview, Sutherland, Highlands (2009), Ridgeway (2011), Carson (2012), and Queen Mary (2013)
- Lonsdale, Maplewood, Monteray and Westover schools have all been closed – generating annual lease revenues of \$600,000
- Enrolment has declined **1712** students since the spring of 2004
- Operating budget challenges continue as per pupil funding remains constant while costs continue to increase – per pupil funding is now per course funding at Gr. 10 through 12.
- Economic boom to an international recession – no increase in per pupil funding, loss of investment income, risk of decline in number of International students



NORTH VANCOUVER
SCHOOL DISTRICT

OPPORTUNITY • CHALLENGE • SUCCESS

www.nvsd44.bc.ca

*the natural place
to learn*

OPPORTUNITY • CHALLENGE • SUCCESS



How things have changed since 2004 !

- Approved Capital project rather than a project request \$16.9 million for Ridgeway (\$750K for extra capacity) (\$15.5 for QM)
- A Heritage replacement project, rather than a renovation and seismic upgrade project
- Flexibility in final capacity: 3 Ks plus 350, or 3 Ks plus 425 either way we will be accommodating 425 Gr. 1 – 7 students
- Steering committees now established to address design components, special features (refuge), transition planning, transportation, resources between schools, staffing, etc.



Proposed Closure of Ridgeway Annex in accordance with Policy 610

- Overview of the criteria identified within
Policy 610: School Closure Policy



**NORTH VANCOUVER
SCHOOL DISTRICT**

OPPORTUNITY • CHALLENGE • SUCCESS

www.nvsg44.bc.ca

*the natural place
to learn*

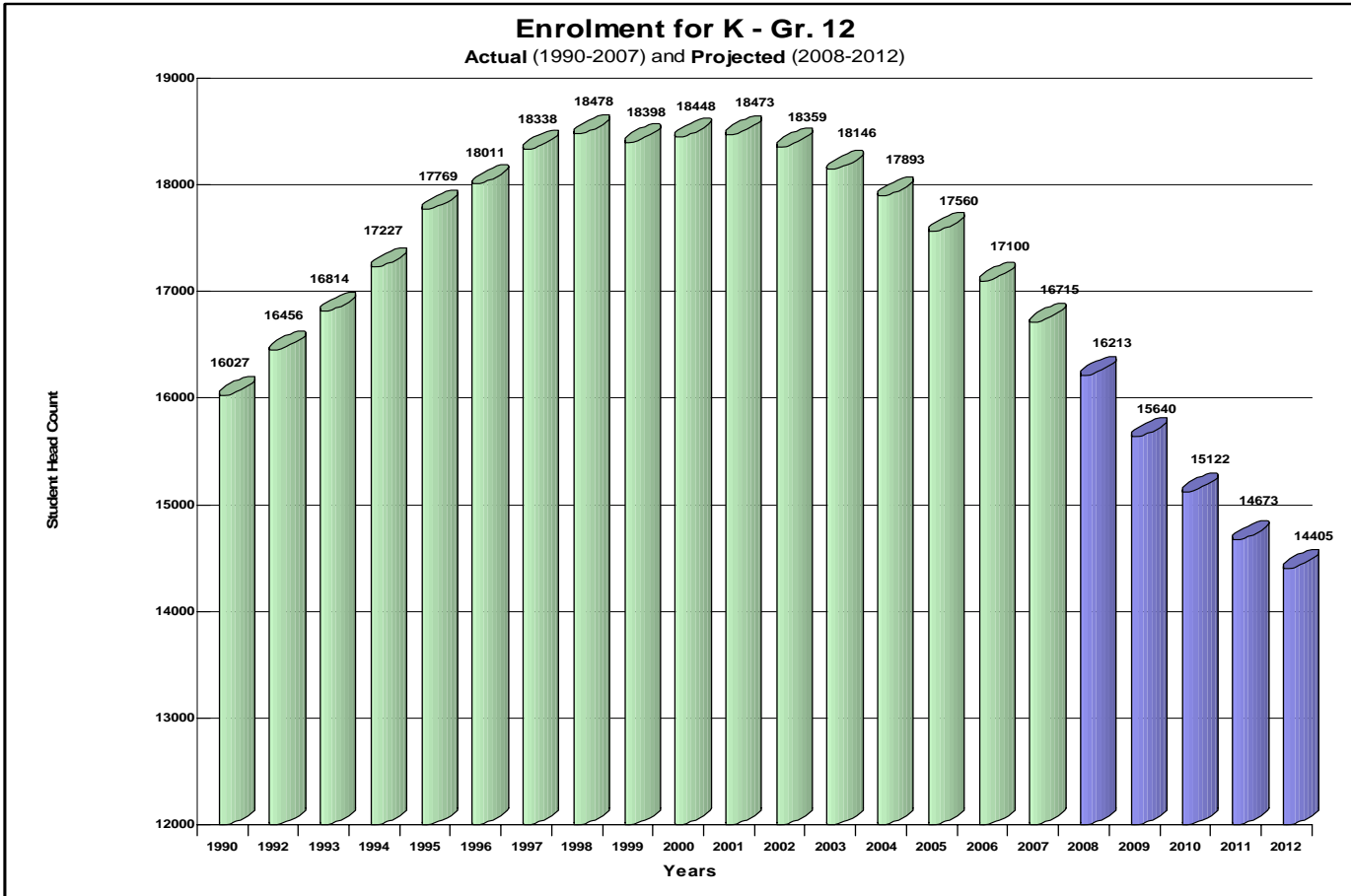
OPPORTUNITY • CHALLENGE • SUCCESS



RIDGEWAY ANNEX - Kindergarten to Gr. 2 with RIDGEWAY Kindergarten to Gr. 7

FACTORS for Consideration from Policy 610	Pertinent data and information	Reference
The number of students who would be affected, at both the closed school and surrounding schools	The Preliminary Projection for 2009/10 indicates that there would be 96 students attending Ridgeway Annex (58 continuing students and 38 projected Kindergarten students). Ridgeway Elementary is projected to have 365 students. The combined population of Ridgeway and Ridgeway Annex for 2009/2010 would be 461 students; 58K, 403 Gr. 1 - 7).	<u>Appendix 1:</u> Enrolment graphs by school, MATRIX long Range Facilities Plan Update 2007.
Enrolment trends and utilization for the school and surrounding area	The MATRIX Update report of 2007 indicates that the Sutherland elementary feeder schools are consistently underutilized with more than 300 surplus spaces available. Some of this space is currently leased to support child care and out of school care. Ridgeway Annex is currently operating at 65% capacity, using all available rooms for the divisions. There is limited space available at neighbouring schools - Brooksbank and Queensbury. Projections prepared by MATRIX indicate that the Sutherland feeder schools are projected to stabilize over the next few years with space remaining available to accommodate more students.	<u>Appendix 1:</u> MATRIX long Range Facilities Plan Update 2007.
Availability of space at receiving schools	The Ridgeway Elementary HERITAGE replacement school has the ability to accommodate the student population of both Ridgeway and Ridgeway Annex with approval from the Ministry to provide three additional classrooms upon the closure of Ridgeway Annex. This approval will allow for an increase in the capacity of the project from 3 K classes and 350 students to 3 K classes and 425 students. There is space available at Brooksbank Elementary that is presently used for a lease. Queensbury will also be able to accommodate a limited number of students.	<u>Appendix 1:</u> MATRIX long Range Facilities Plan Update 2007 (pg. 67)
Proximity to possible receiving schools and the routes to schools	Ridgeway Elementary school is less than 1 km from Ridgeway Annex. While the majority of students currently attending Ridgeway Annex live closer to the Annex, there are a small number who live closer to Ridgeway. As an Annex to Ridgeway, students attending the Annex go to Ridgeway for Grade 3 to Grade 7. There are two locations with crossing guards on Keith Road to assist students with the crossing of Keith Road.	<u>Appendix 2:</u> Catchment Area maps by school
Socio-economic conditions in the affected community	The community served by Ridgeway Annex is diverse in terms of the socio-economic conditions.	<u>Appendix 3:</u> Community Vulnerability
Educational program/course implications for the affected students	Ridgeway School has been able to provide additional programs (and more specialist staff) as a result of its larger school size in comparison to Ridgeway Annex. With additional students and divisions there could be less frequent access to general facilities (gymnasium, library, computer lab, music room). The new school will have a much larger gymnasium and additional multi-purpose space.	<u>Appendix 4:</u> Optimum School Size paper

Declining Enrolment



**NORTH VANCOUVER
SCHOOL DISTRICT**

OPPORTUNITY • CHALLENGE • SUCCESS

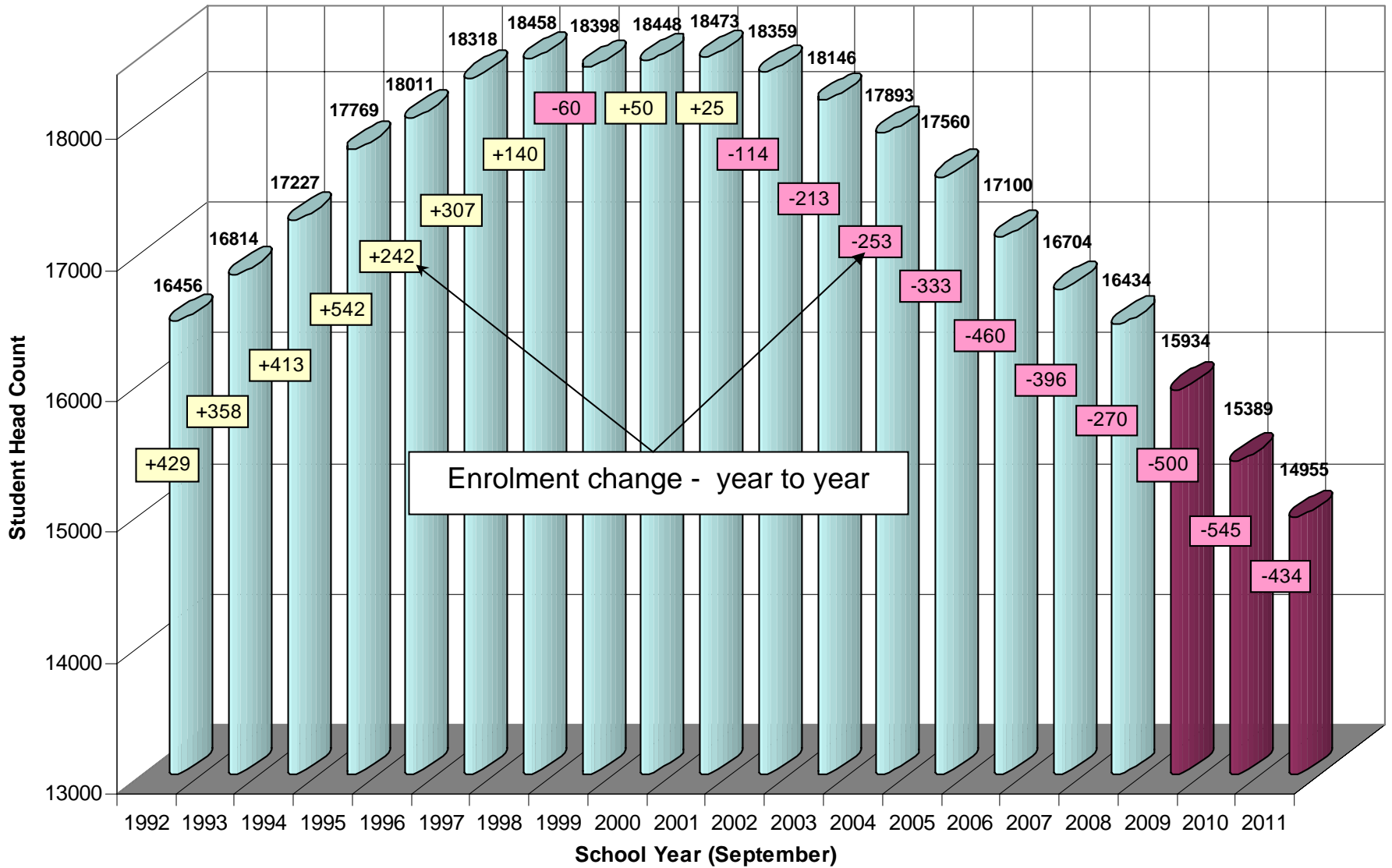
*the natural place
to learn*

www.nvgsd44.bc.ca

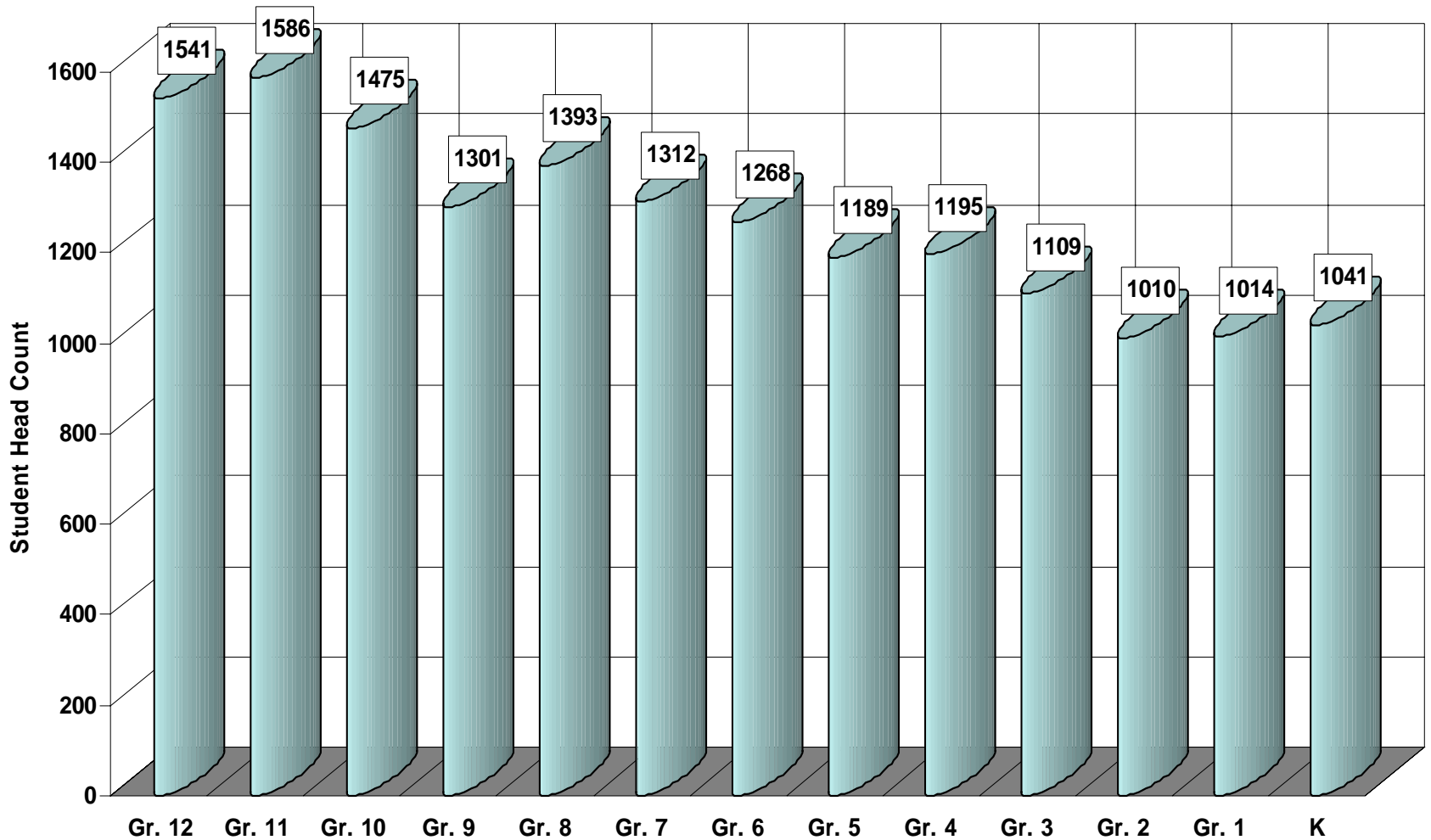
OPPORTUNITY • CHALLENGE • SUCCESS



Enrolment Actual '92-'08 and Projected '09-'11 (All Programs)



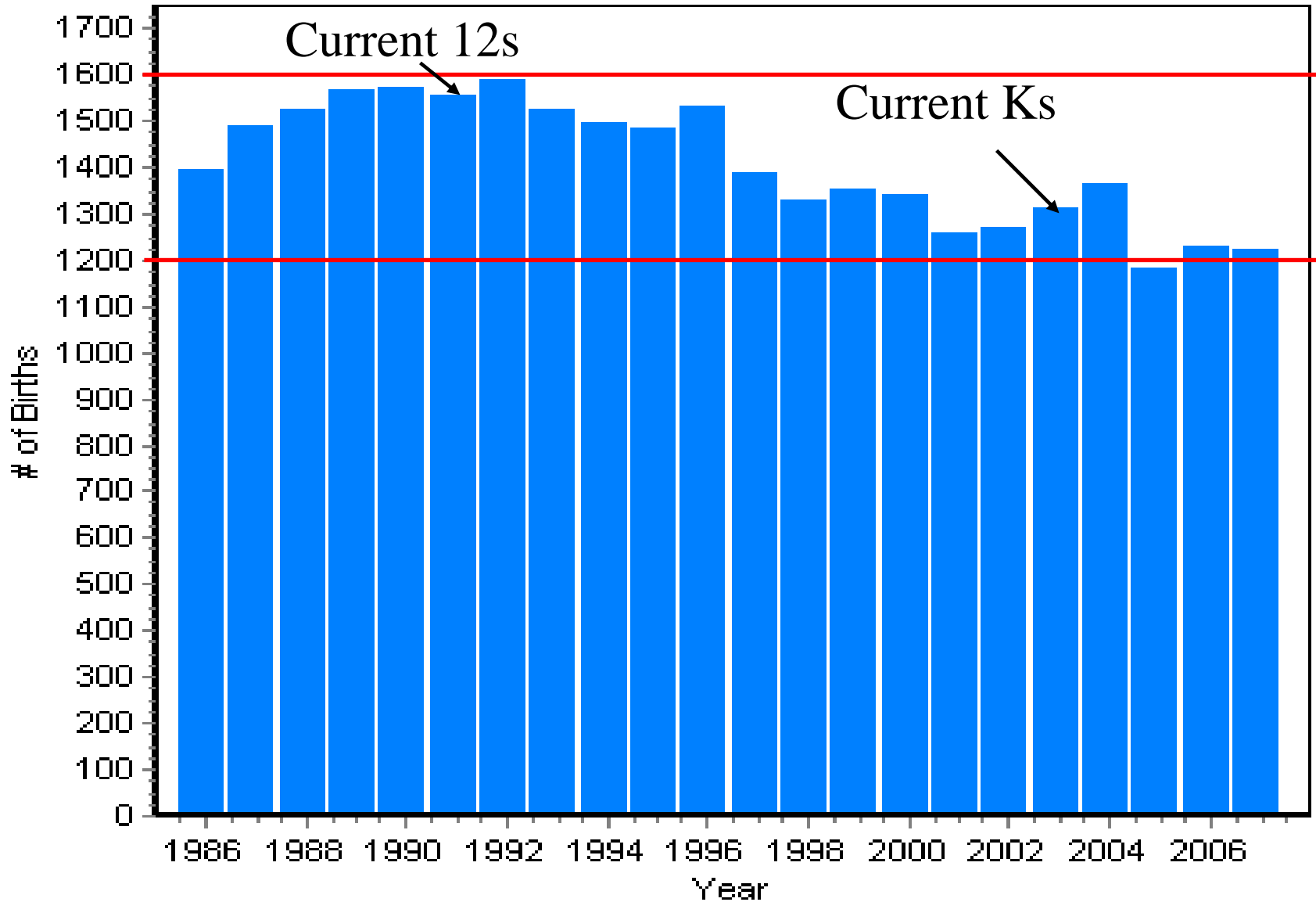
Enrolment Actual by Grade (All Programs) September 30, 2008



**"Rollover" projection for 2009/10 indicates a decline of 500 students
Subtract Gr. 12s graduating from estimated Ks entering (1541 - 1041 = - 500)**

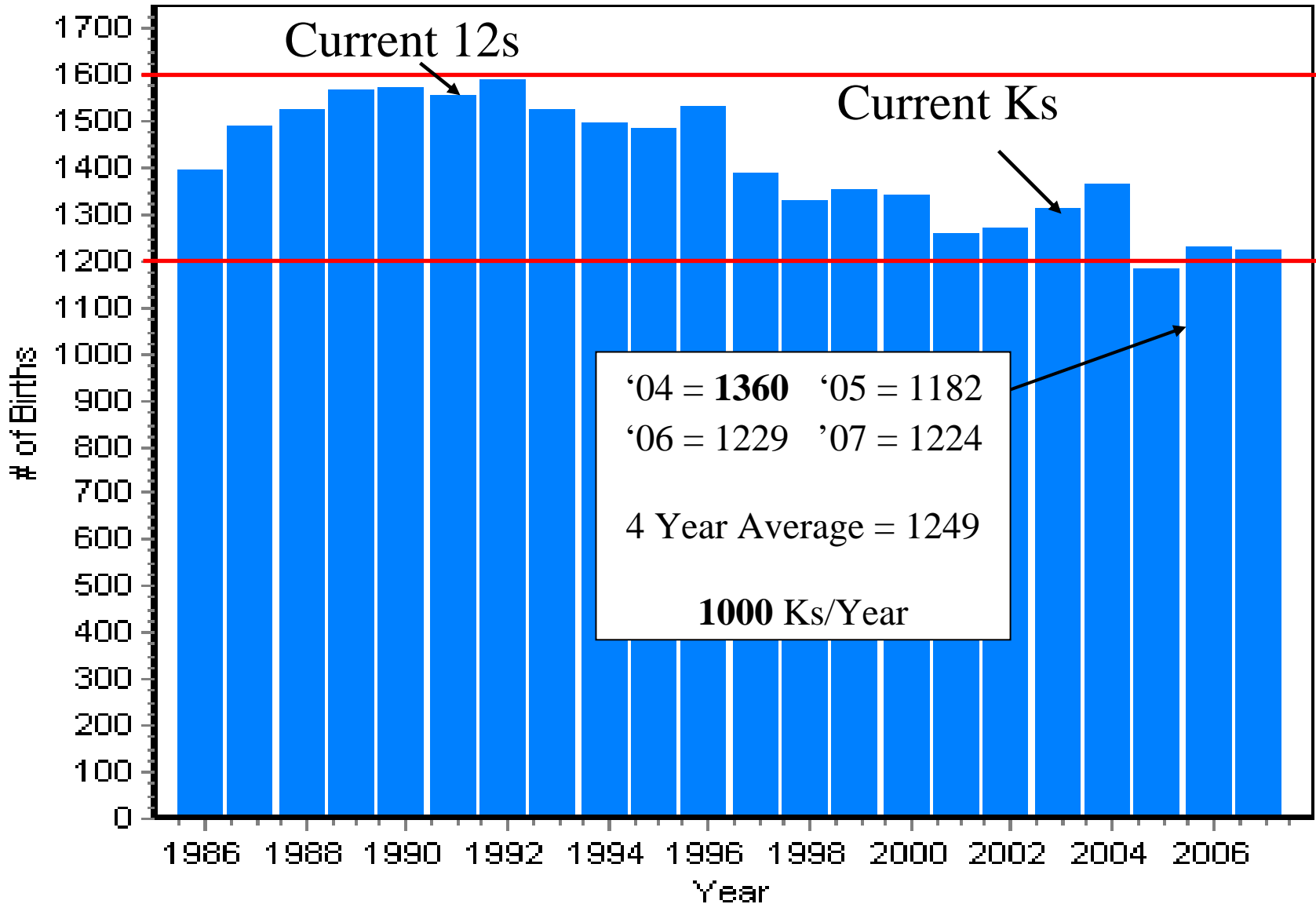
Births: North Vancouver

(Data source: Birth Registry of BC Vital Statistics Dept.)



Births: North Vancouver

(Data source: Birth Registry of BC Vital Statistics Dept.)



Low Rate of Population Growth

Comparison of population growth rates in 01-06 period:

- District of North Van = 0.3%
- District of West Van = 1.7%
- City of North Van = 2.4 %
- City of Vancouver = 5.9%
- Surrey = 13.6%
- Port Moody = 15.5%
- Greater Van Region = 6.5%



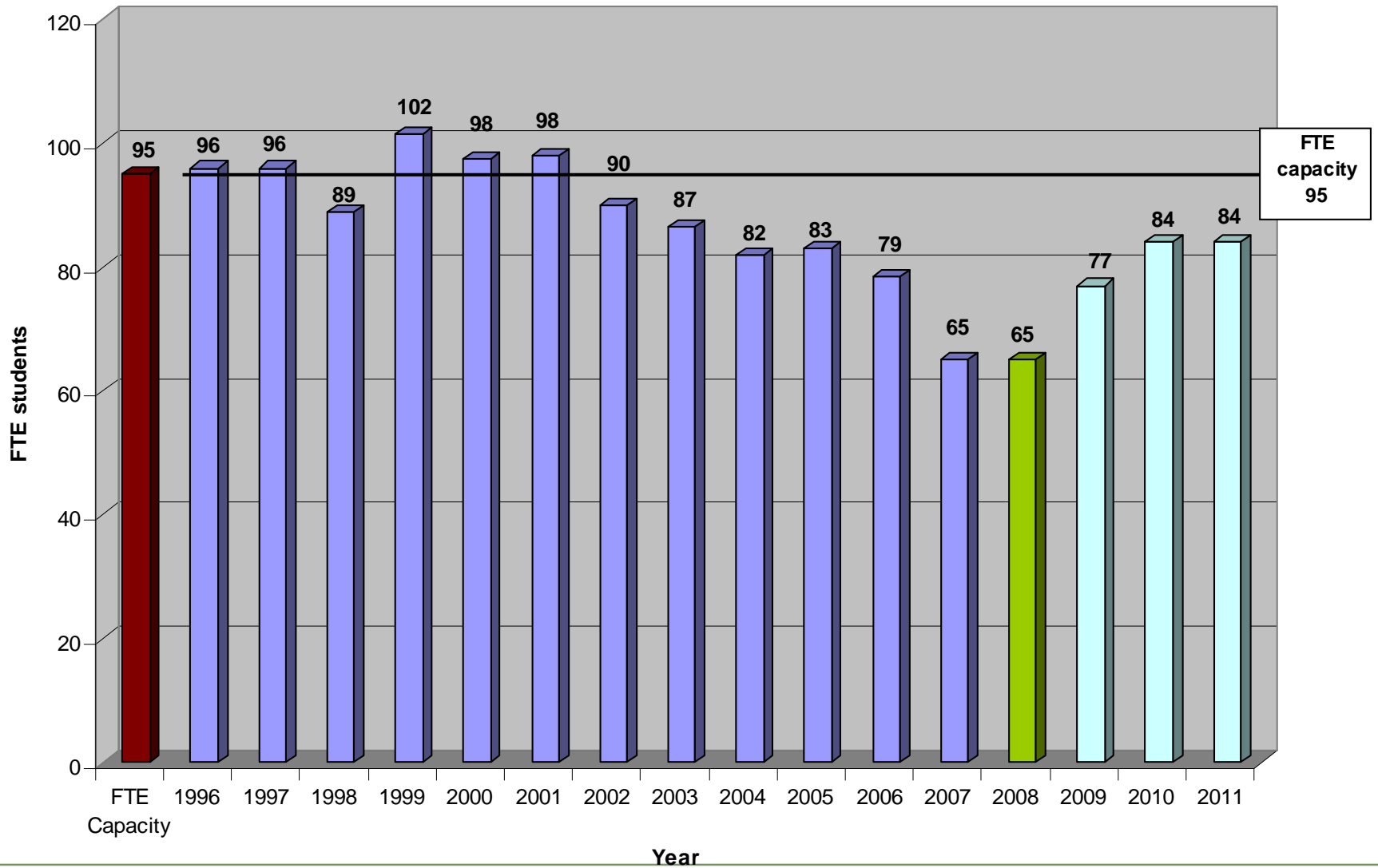
The number of students who would be affected, at both the closed school and surrounding schools

- The Preliminary Projection for 2009/10 indicates that there would be 96 students attending Ridgeway Annex (58 continuing students and 38 projected Kindergarten students).
- Ridgeway Elementary is projected to have 365 students. The combined population of Ridgeway and Ridgeway Annex for 2009/2010 would be 461 students; 58K, 403 Gr. 1 - 7).



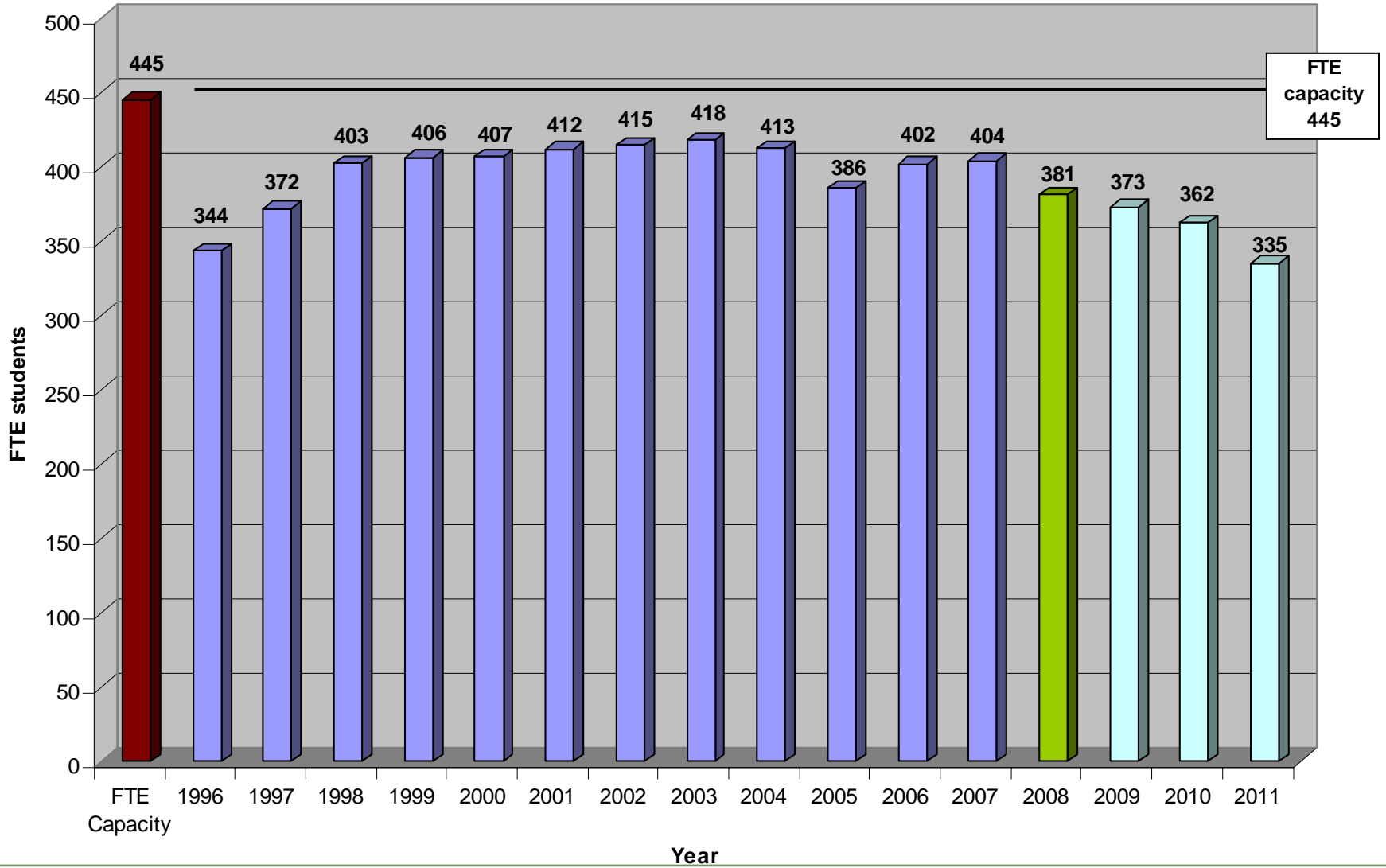
RIDGEWAY ANNEX ELEMENTARY

FTE enrolment (Historical and Projected Rollover)



RIDGEWAY ELEMENTARY

FTE enrolment (Historical and Projected Rollover)



Enrolment trends and utilization for the school and surrounding area

- The MATRIX Update report of 2007 indicates that the Sutherland elementary feeder schools are consistently underutilized with more than 300 surplus spaces available. Some of this space is currently leased to support child care and out of school care.
- Ridgeway Annex is currently operating at 65% capacity, using all available rooms for the divisions. There is limited space available at neighbouring schools - Brooksbank and Queensbury. Projections prepared by MATRIX indicate that the Sutherland feeder schools are expected to stabilize over the next few years with space remaining available to accommodate more students.



NORTH VANCOUVER
SCHOOL DISTRICT

OPPORTUNITY • CHALLENGE • SUCCESS

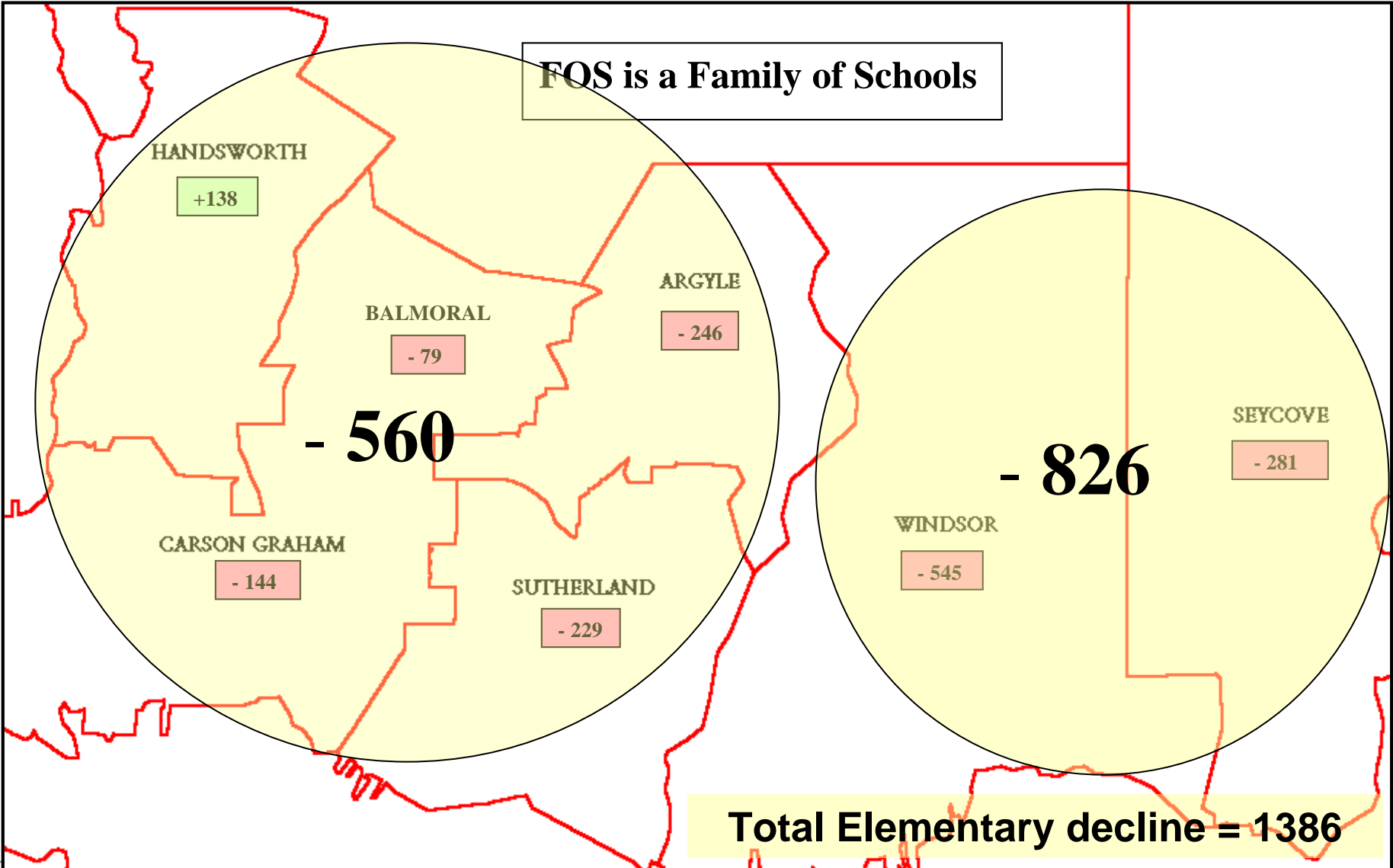
www.nv44.bc.ca

*the natural place
to learn*

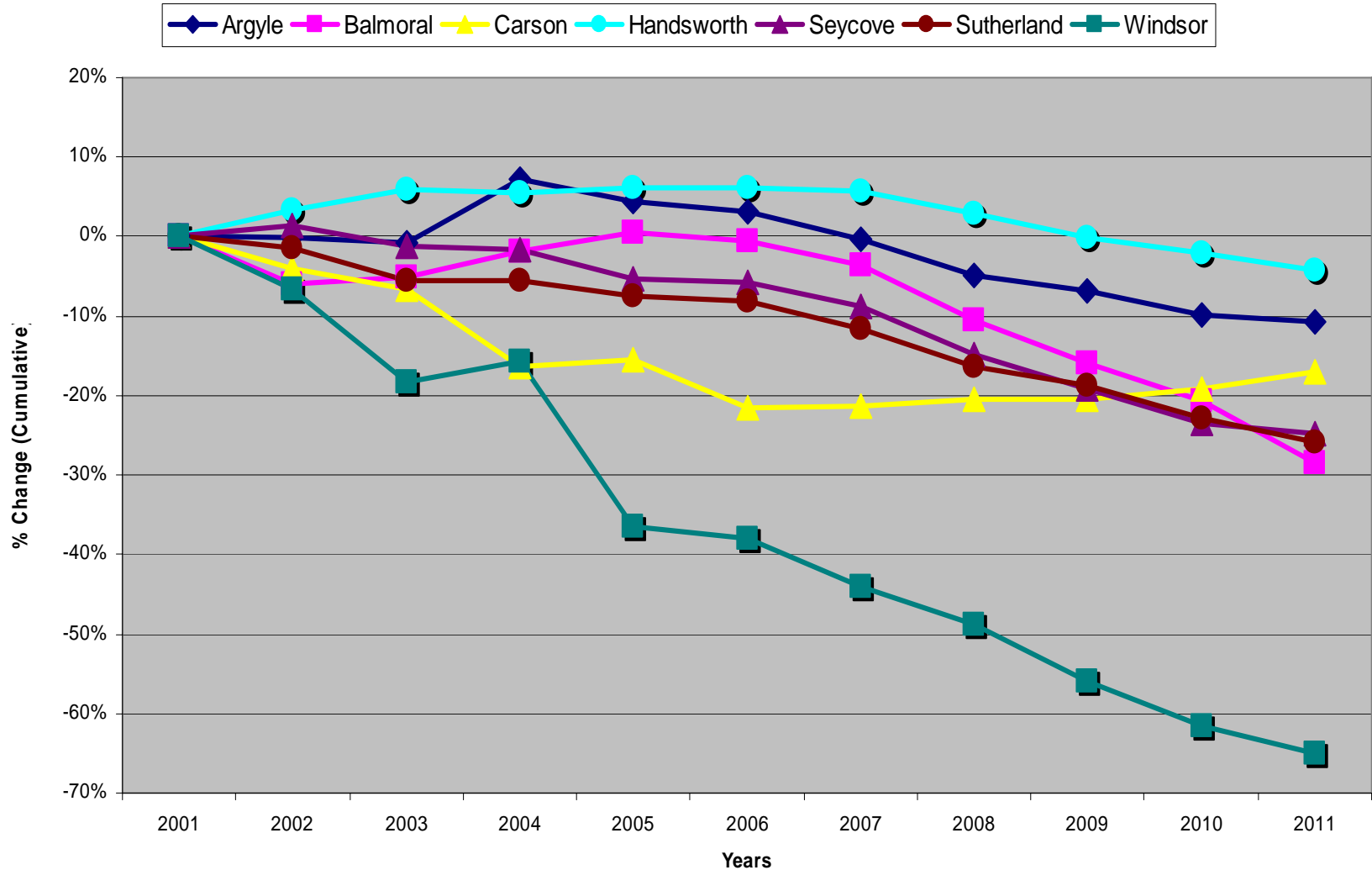
OPPORTUNITY • CHALLENGE • SUCCESS



Change in Enrolment by Elementary FOS Feeder Schools from 2000 to 2008



Secondary FEEDER SCHOOLS Enrolment Change



Availability of space at receiving schools

- The Ridgeway Elementary HERITAGE replacement school has the ability to accommodate the student population of both Ridgeway and Ridgeway Annex with approval from the Ministry to provide three additional classrooms upon the closure of Ridgeway Annex.
- This approval will allow for an increase in the capacity of the project from 3 K classes and 350 students to 3 K classes and 425 students and a budget increase of \$750,000.
- There is space available at Brooksbank Elementary that is presently used for a lease. Queensbury will also be able to accommodate a limited number of students.



Ridgeway Attendance Area
Ridgeway pupils by residence

5

49

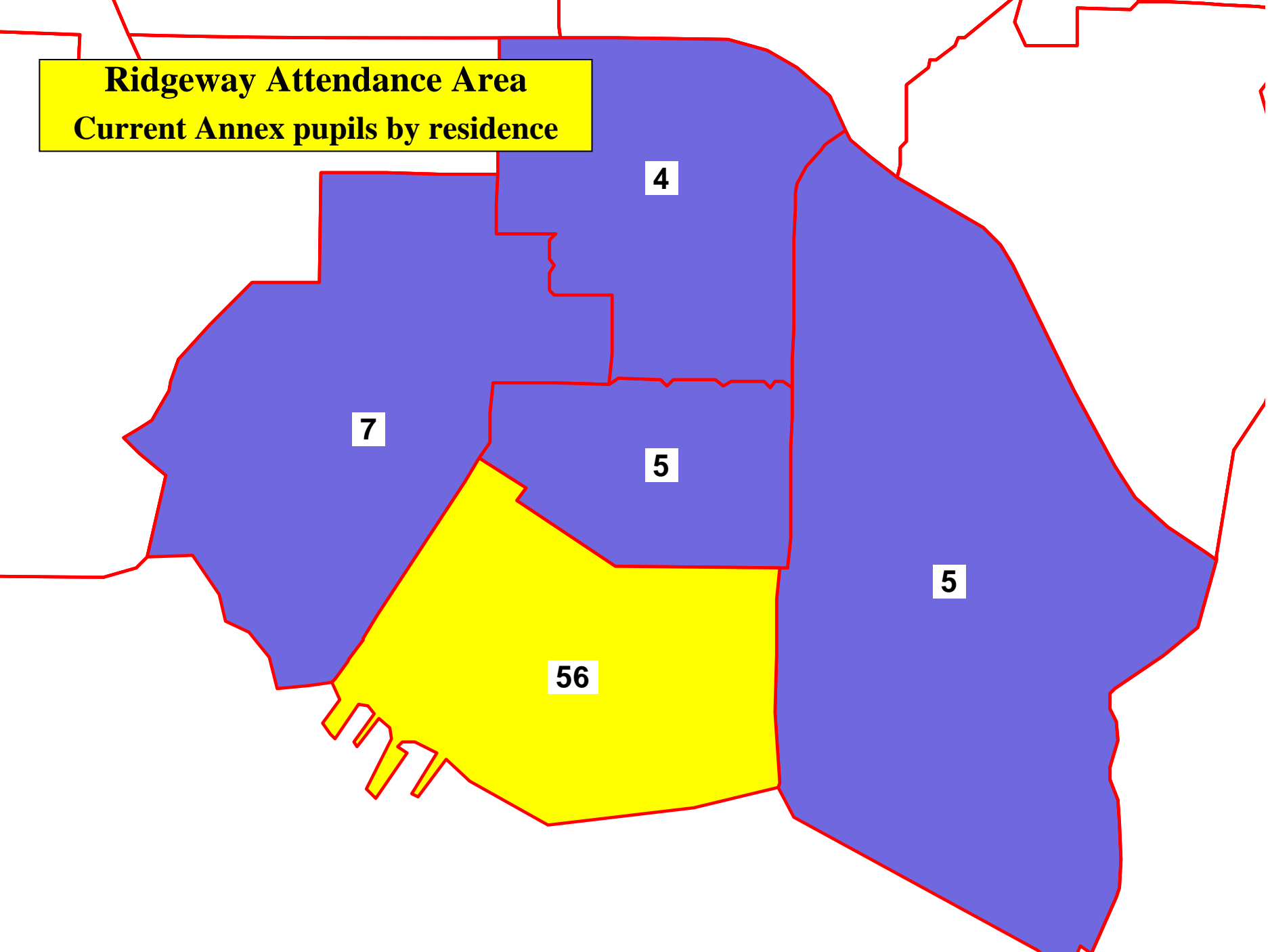
262

20

27

5

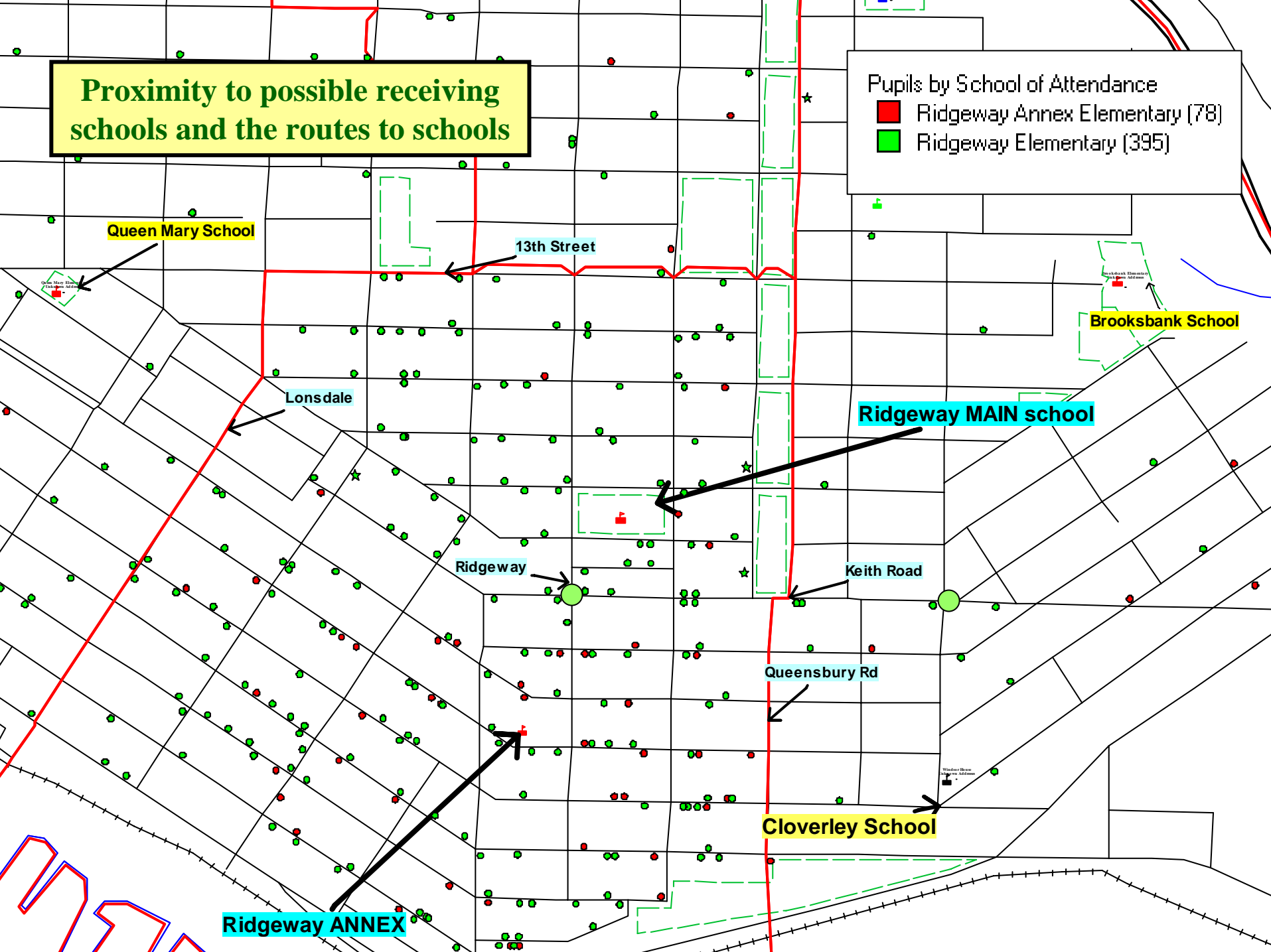
Ridgeway Attendance Area
Current Annex pupils by residence



Proximity to possible receiving schools and the routes to schools

Pupils by School of Attendance

- Ridgeway Annex Elementary (78)
- Ridgeway Elementary (395)



Queen Mary School

13th Street

Brooksbank School

Lonsdale

Ridgeway MAIN school

Ridgeway

Keith Road

Queensbury Rd

Cloverley School

Ridgeway ANNEX

Educational program implications for students

- Ridgeway School has been able to provide additional programs (and more specialist staff) as a result of its larger school size in comparison to Ridgeway Annex.
- A larger school will provide for specialty areas including a computer lab, and a multi-purpose room, suitable for music instruction
- The new school will also have a larger gymnasium built to current Ministry standards



NORTH VANCOUVER
SCHOOL DISTRICT
OPPORTUNITY • CHALLENGE • SUCCESS

www.nvsg44.bc.ca

*the natural place
to learn*

OPPORTUNITY • CHALLENGE • SUCCESS



Finances of Public Education



**NORTH VANCOUVER
SCHOOL DISTRICT**

OPPORTUNITY • CHALLENGE • SUCCESS

www.nv44.bc.ca

*the natural place
to learn*

OPPORTUNITY • CHALLENGE • SUCCESS



Finances of Public Education

- Provincial funding on a “per pupil” basis means that a portion of funds provided for each child must contribute towards the operating overhead associated with the facilities and core district requirements
- Provincial funding formula shifts in 2007 to “per course” funding for all Grade 10s, 11s and 12s
- While funding levels have been maintained, costs continue to escalate
- NVSD has become increasingly self-supporting through revenue generation & the implementation of cost reductions & efficiencies
- Joint Advocacy by partner groups (Board, NVTAs, NVPAC, CUPE) continues for recognition of the “true costs” of Education



Financial considerations including anticipated cost savings

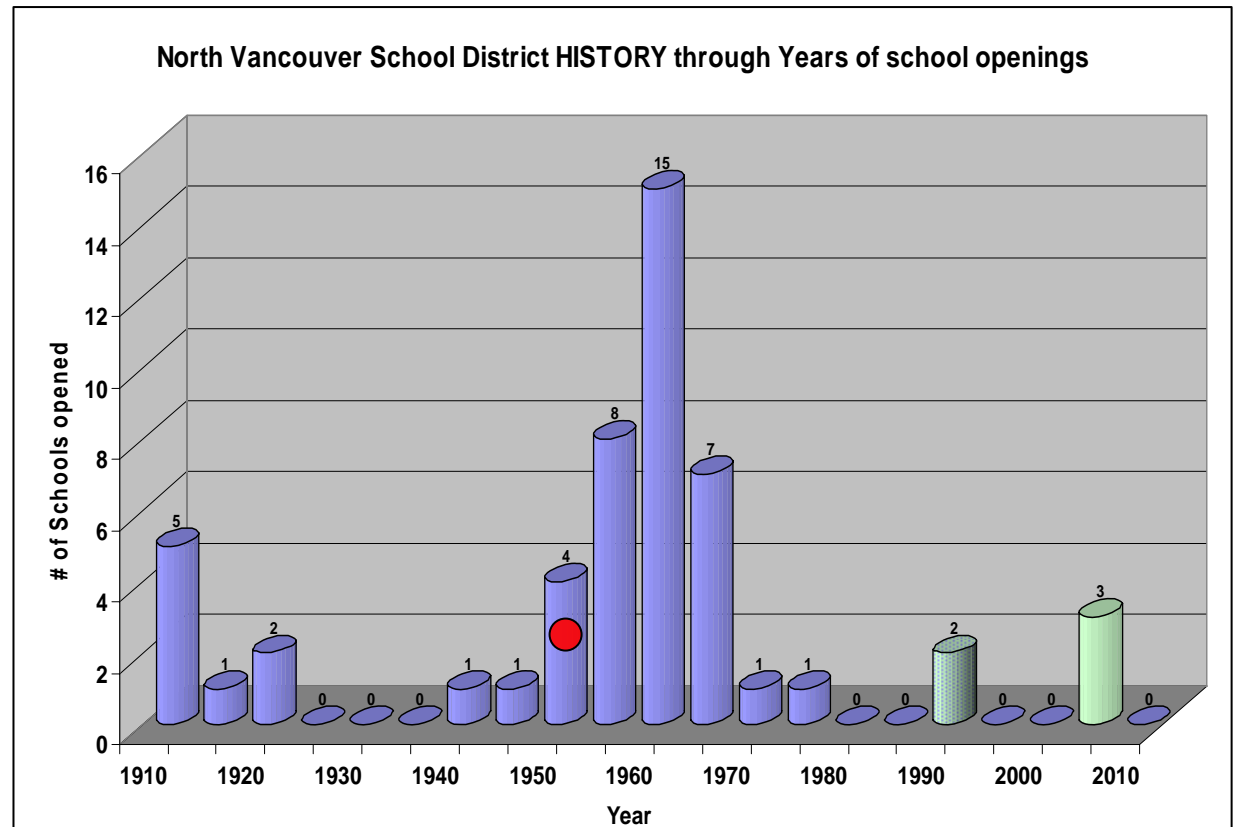
ANNUAL Direct Operating Overhead COST SAVINGS for RIDGEWAY ANNEX	
Staffing Direct	
	Staffing costs are reduced through the positions of Principal, Vice-Principal, Secretary, Supervision Aide and Custodians. Teaching costs are reduced primarily as a result of library time and additional staffing allocations that have historically occurred to address minimal operational requirements. While efficiencies can be achieved for individual school organizations with fewer divisions required, district class size requirements must still be met. Cost savings for all staff include salaries and benefits.
Supplies, Services and Utilities	
	Costs savings in this area are related to facility operating costs. <u>Utilities</u> include electricity, gas, oil, propane, water & sewage, garbage & recycling. <u>Contracted Services</u> include glass repair, roof repair, fire protection (sprinklers, alarms, extinguishers), security and emergency services and other facilities costs. These costs have been pro-rated to reflect the size and area of the facility. <u>Supplies</u> include telecommunications and office services only.
Total estimated annual operating savings = \$208,127	



Facility age and condition

Ridgeway Annex was opened in 1953 and is now over 55 years old.

The Ministry of Education Facility Audit score of 25% indicates that the school facility is in poor condition.



Potential for revenue generation through lease and/or sale

- There is potential for limited revenue generation through lease as a result of the small size of the facility.
- Although the lease and/or sale of the site could yield a reasonable return, this property should be retained to address potential future enrolment growth that may occur through the redevelopment of the lower Lonsdale and waterfront area.
- The facility may be suitable for lease over the shorter term to address existing and future community demands for pre-school and out of school care programs, while also generating revenue for the School District.



Impact on the Board of Education's five-year capital plan submitted to the Ministry of Education

- The 2008/2009 Five-Year Capital Plan includes the #19 priority request for the replacement of Ridgeway Annex at an estimated cost of \$4 million.
- The closure of Ridgeway Annex would relieve the School District's total capital requirements of \$201 million by the requested amount of \$4 million.



**NORTH VANCOUVER
SCHOOL DISTRICT**

OPPORTUNITY • CHALLENGE • SUCCESS

www.nv44.bc.ca

*the natural place
to learn*

OPPORTUNITY • CHALLENGE • SUCCESS



Future Community Growth

- The developments that have been built and are planned for the waterfront and lower Lonsdale are expected to generate limited school age population. These developments have been factored into the projections developed by MATRIX consultants.
- Due to the location of these developments, additional student population would likely add to the enrolments of Queen Mary and Westview schools.
- However, the size of the area undergoing redevelopment suggests the need to retain the site. Over the longer period, growth could possibly result in the need for a school with a larger capacity than the Annex currently provides.



**NORTH VANCOUVER
SCHOOL DISTRICT**

OPPORTUNITY • CHALLENGE • SUCCESS

www.nvsg44.bc.ca

*the natural place
to learn*

OPPORTUNITY • CHALLENGE • SUCCESS



Rationale for closure consideration

Supporting a Ridgeway School of 3K and 425 Gr. 1 – 7

- ✓ Sufficient capacity to accommodate current & future enrolment
 - *potential loss of small school with close connections*
- ✓ Increased opportunity for programs, specialty spaces & specialty staff
- ✓ Enhanced opportunities for community partnerships (NSNH, etc.)
- ✓ Reduced operating overhead costs to free up funds for the classroom
- ✓ New, safe, sustainable and welcoming school, for more students
- ✓ Maintain the building and lands for community purpose, revenue generation and to address future growth potential
- ✓ Reduce capital plan requests and requirements to focus on capital needs in other areas of the School District



Proposed Ridgeway Annex Closure

Response Guidelines

(To be prepared by the Response Coordinating Team)

- Consider the criteria from Policy 610
- Summarize the key points from community
- Propose alternative proposed options, if any
- Provide suggestions regarding the transition process
(should the decision be made to proceed with closure)
- Provide response to the Board of Education – April 14, 2008



NORTH VANCOUVER
SCHOOL DISTRICT
OPPORTUNITY • CHALLENGE • SUCCESS

*the natural place
to learn*

www.nvsg44.bc.ca

OPPORTUNITY • CHALLENGE • SUCCESS





**PROPOSAL TO CONSIDER
SCHOOL CLOSURE AND CONSOLIDATION**

Input Form (to be summarized by the School Response Coordinating Team)

The Board of Education is committed to its vision; *to provide world-class instruction and a rich diversity of engaging programs to inspire success for every student and bring communities together to learn, share and grow.*

Declining enrolment, aging facilities and funding restraint are the expected realities that will impact planning decisions for the next decade. Fewer students mean less funding and more unused space. The Board of Education must make difficult decisions to address these issues while maintaining a focus on providing rich educational opportunities for students in welcoming, safe and sustainable facilities that enhance the learning and teaching environment.

As the Board of Education has decided to consider the consolidation of Ridgeway Annex and Ridgeway schools with the potential closure of Ridgeway Annex in June 2011, a consultative process is now proceeding in accordance with Policy 610: Closure of Schools (Permanent). This process enables members of the school and its community with opportunities for input for consideration by the Board.

The consultation process includes public meetings, input opportunities, the coordination of response reports from schools, and the careful consideration of alternatives to a potential closure. The Board of Trustees is interested in receiving your input into the proposed closure of Ridgeway Annex and the consolidation of these schools at a new Ridgeway School. The Response Coordinating Teams will summarize this input in the preparation of a School Response Report for each school.

-
1. My connection to Ridgeway Annex and Ridgeway school is as a _____.
 2. If you do not support the closure of Ridgeway Annex and the consolidation of Ridgeway Annex and Ridgeway Schools at Ridgeway, please explain why you do not support this closure and consolidation.
-

Proposed School Closures

Ridgeway Annex

Questions, input opportunity

